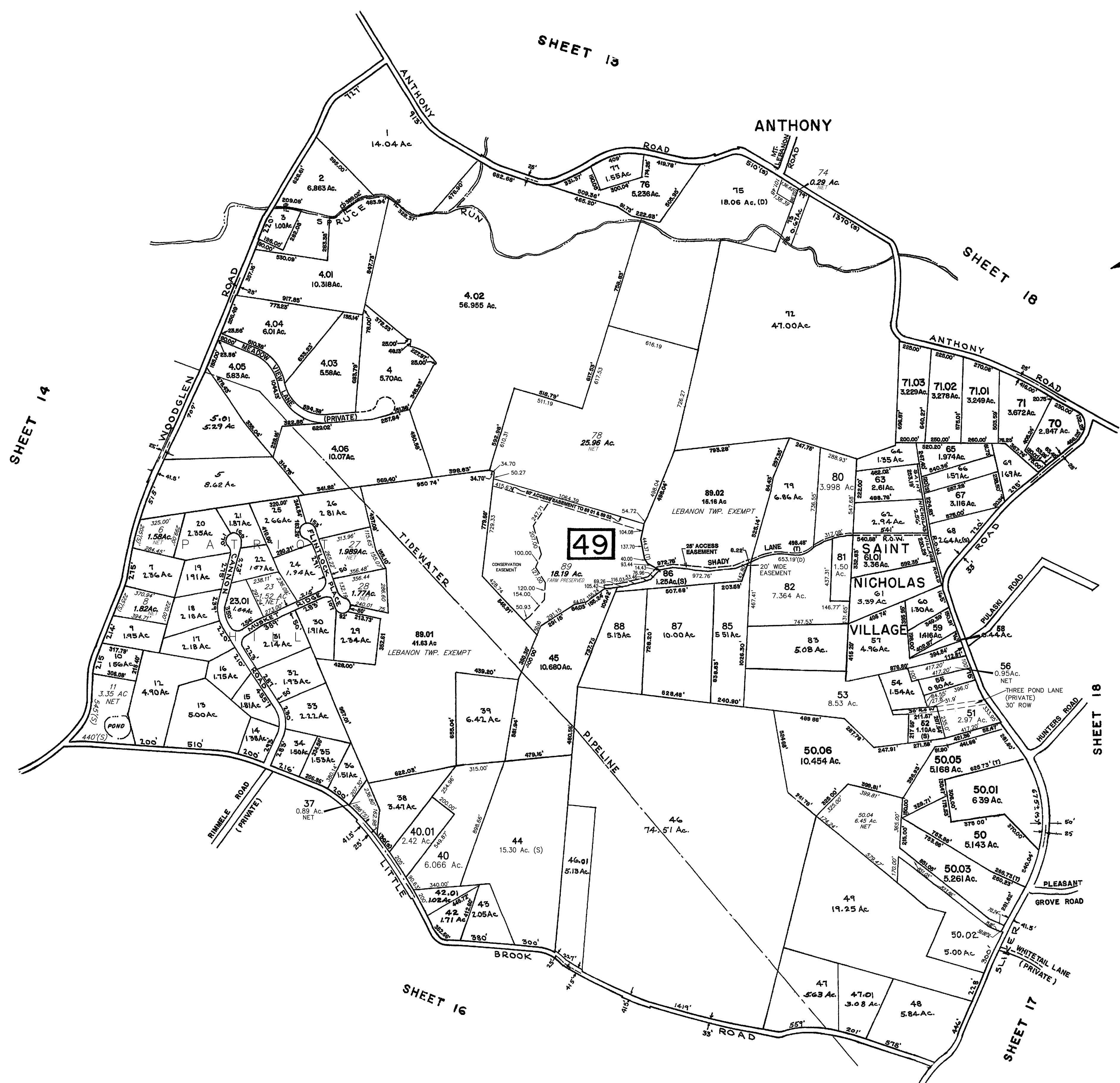


REVISIONS		
DATE	L.S. NAME	L.S. No.
07/2017	PAMELA L. MATTHEWS, LS	41181



TAX MAP
 of
LEBANON TOWNSHIP
 in
HUNTERDON COUNTY, NEW JERSEY

prepared by
JOHN E. STUDER, P.E. & L.S.
Studer & McEidowney
 Civil Engineers & Land Surveyors
 120 Highway 22 • Clinton, New Jersey
 Scale: 1" = 400' May 1967

Thomas L. Yager & Associates
 10 Gray Brook Road • Clinton, New Jersey 08809
 THOMAS L. YAGER, N.J.S. 26790
 REVISIONS:
 REVISOR 15FEB06
 REVISOR 03 JAN 07
 REVISOR 02 JAN 08
 REVISOR 02 JAN 09
 REVISOR 04 JAN 10
 REVISOR 04 JAN 11
 REVISOR 03 JAN 12

BAYER-RISSE ENGINEERING, INC.
 P.O. BOX 131, Lebanon, NJ 08833
 REVISOR: JAN 1, 2001
 REVISOR: JAN 1, 2002
 BRUCE R. BLAIR, PROF. LAND SURVEYOR #15098 09
 REVISOR: JAN 1, 2004
 REVISOR: JAN 1, 2008

HERITAGE CONSULTING ENGINEERS
 20 COMMERCE STREET, SUITE 2020, FLEMINGTON, NJ 08822
 REVISOR: JAN 1, 1987, JAN 1, 1988, JAN 1, 1989, JAN 1, 1990, JAN 1, 1991
 JAN 1, 1992, JAN 1, 1993, JAN 1, 1994, JAN 1, 1995
 JAN 1, 1997, JAN 1, 2014, JAN 1, 2016

NEW JERSEY DEPARTMENT OF THE TREASURY
 DIVISION OF TAXATION
 PUBLIC UTILITY TAX BUREAU
 APPROVED AS A TAX MAP PURSUANT TO THE
 PROVISIONS OF CHAPTER 175, LAWS OF 1913, ETC.
 FOR THE DIRECTOR, DIVISION OF TAXATION
 BY *J. H. Dumas* STATE SUPERVISOR
 DATE **JUL 20 1967** SERIAL NO. **452**

REVISOR: MAY 15, 1968
 REVISOR: AUG 1, 1969
 REVISOR: JULY 1, 1970
 REVISOR: APRIL 1, 1972
 REVISOR: JAN 2, 1974
 REVISOR: JUNE 2, 1975
 REVISOR: JUNE 30, 1976
 REVISOR: OCT 1, 1977
 REVISOR: DECEMBER 15, 1978
 REVISOR: JAN 2, 1980
 REVISOR: FEB 4, 1981
 REVISOR: JAN 16, 1982
 REVISOR: DEC 3, 1987