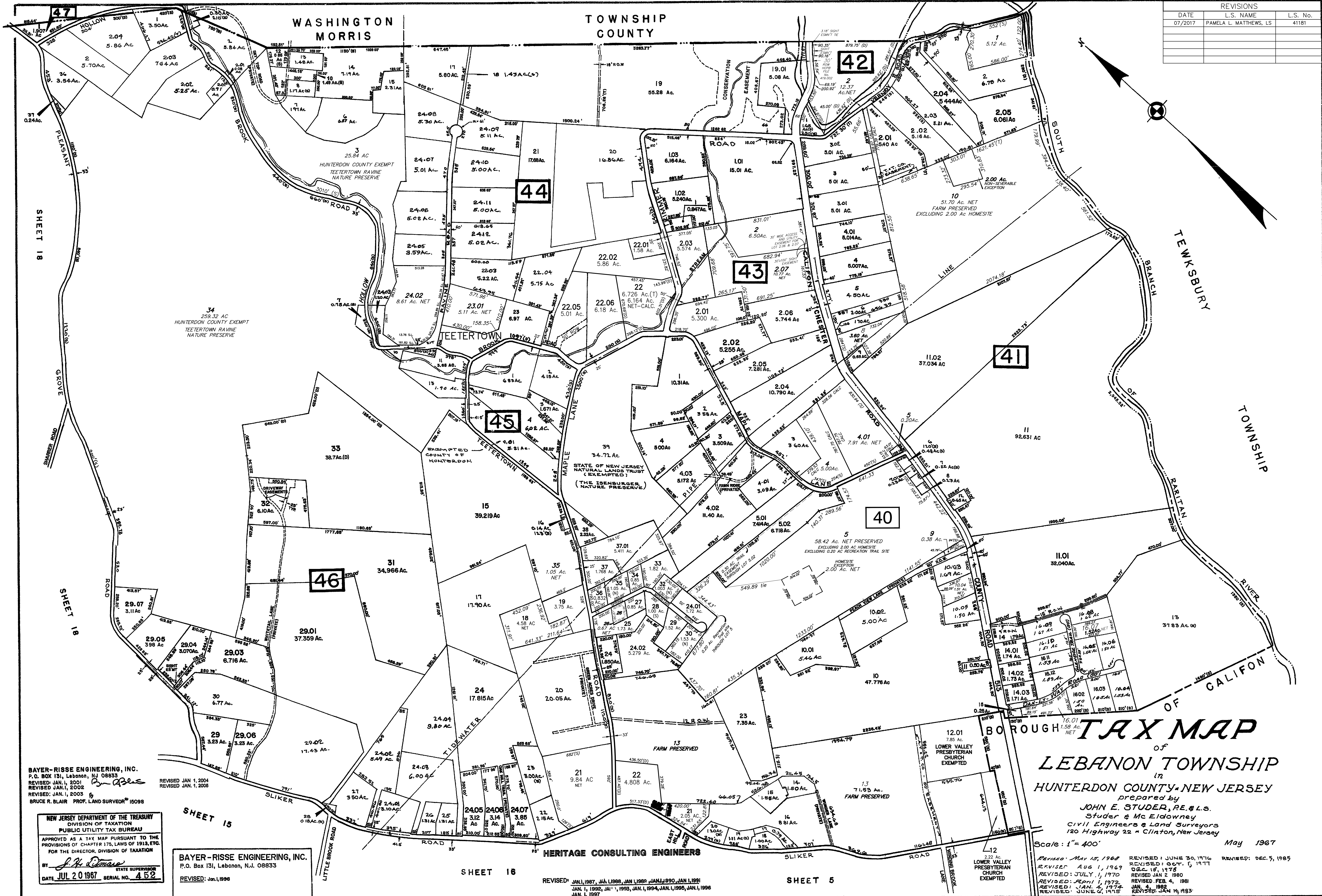


REVISIONS		
DATE	L.S. NAME	L.S. No.
07/2017	PAMELA L. MATTHEWS, LS	41181



BAYER-RISSE ENGINEERING, INC.
 P.O. BOX 131, Lebanon, NJ 08833
 REVISED JAN. 1, 2001
 REVISED JAN. 1, 2002
 REVISED JAN. 1, 2003
 BRUCE R. BLAIR PROF. LAND SURVEYOR #15098

REVISED JAN. 1, 2004
 REVISED JAN. 1, 2006

NEW JERSEY DEPARTMENT OF THE TREASURY
 DIVISION OF TAXATION
 PUBLIC UTILITY TAX BUREAU
 APPROVED AS A TAX MAP PURSUANT TO THE
 PROVISIONS OF CHAPTER 175, LAWS OF 1915, ETC.
 FOR THE DIRECTOR, DIVISION OF TAXATION
 BY *J. H. Roman* STATE SUPERVISOR
 DATE JUL 20 1987 SERIAL NO. 452

BAYER-RISSE ENGINEERING, INC.
 P.O. Box 131, Lebanon, N.J. 08833
 REVISED: Jan. 1, 1998

HERITAGE CONSULTING ENGINEERS

SHEET 16

REVISED: JAN. 1, 1987, JAN. 1, 1988, JAN. 1, 1989, JAN. 1, 1990, JAN. 1, 1991
 JAN. 1, 1992, JAN. 1, 1993, JAN. 1, 1994, JAN. 1, 1995, JAN. 1, 1996
 JAN. 1, 1997

SHEET 5

TAX MAP

of
LEBANON TOWNSHIP
 in
HUNTERDON COUNTY, NEW JERSEY

prepared by
JOHN E. STUDER, P.E. & L.S.
 Studer & McEldowney
 Civil Engineers & Land Surveyors
 120 Highway 22 • Clinton, New Jersey

Scale: 1" = 400'
 May 1967
 Revised: May 15, 1968
 Revised: Aug 1, 1969
 Revised: July 1, 1970
 Revised: April 1, 1972
 Revised: Jan. 4, 1973
 Revised: June 2, 1975
 Revised: June 30, 1976
 Revised: Oct. 5, 1977
 Revised: Feb. 2, 1980
 Revised: Feb. 4, 1981
 Revised: Jan. 14, 1983
 Revised: Dec. 5, 1985