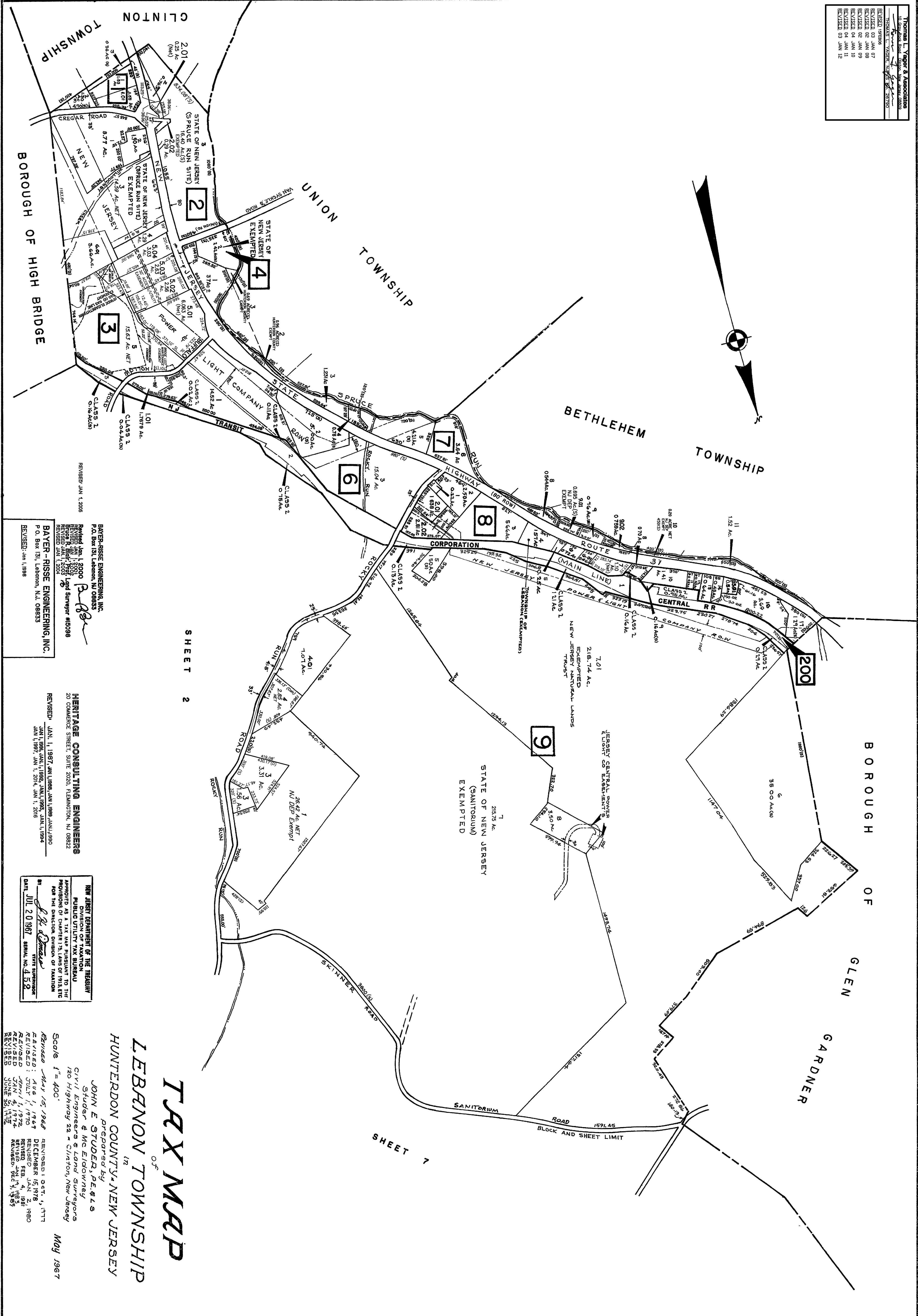


Thomas L. Yager & Associates
 10 Gateway Road, Dayton, NJ 08809
 P.O. Box 100, Lebanon, NJ 08833
 Phone: 908-833-8888
 Fax: 908-833-8889
 E-mail: tyager@tyager.com

REVISED 03 JAN 07
 REVISED 02 JAN 08
 REVISED 02 JAN 09
 REVISED 04 JAN 10
 REVISED 09 JAN 11
 REVISED 09 JAN 12



SHEET 2

SHEET 7

BAVER-RISSE ENGINEERING, INC.
 P.O. Box 151, Lebanon, NJ 08833
 Revised Jan 1, 2006
 Revised Jan 1, 2007
 Revised Jan 1, 2008
 Revised Jan 1, 2009
 Revised Jan 1, 2010
 Revised Jan 1, 2011
 Revised Jan 1, 2012

HERITAGE CONSULTING ENGINEERS
 20 Commerce Street, Suite 2020, Flemington, NJ 08822
 Revised: JAN 1, 1987, JAN 1, 1988, JAN 1, 1989, JAN 1, 1990
 JAN 1, 1991, JAN 1, 1992, JAN 1, 1993, JAN 1, 1994
 JAN 1, 1997, JAN 1, 2004, JAN 1, 2018

NEW JERSEY DEPARTMENT OF THE TREASURY
 DIVISION OF TAXATION
 PUBLIC UTILITY TAX BUREAU
 APPROVED AS A TAX MAP PURSUANT TO THE
 PROVISIONS OF CHAPTER 178, LAWS OF 1913, ETC.
 FOR THE DIVISION OF TAXATION

DATE: **JUL 20 1987** SERIAL NO. **452**

TAX MAP
 OF
LEBANON TOWNSHIP
 HUNTERDON COUNTY, NEW JERSEY

Prepared by
JOHN E. STUDDER, P.E., S.
 Studer & McElwain
 Civil Engineers & Land Surveyors
 120 Highway 22 • Clinton, New Jersey

Scale: 1" = 400'

Revised: May 15, 1968
 Revised: Aug 1, 1969
 Revised: July 1, 1970
 Revised: Jan 1, 1972
 Revised: June 1, 1975
 Revised: Dec 1, 1985

Revised: Oct. 1, 1977
 Revised: December 15, 1978
 Revised: Jan 1, 1980
 Revised: Jan 1, 1983
 Revised: May 1, 1985

May 1987