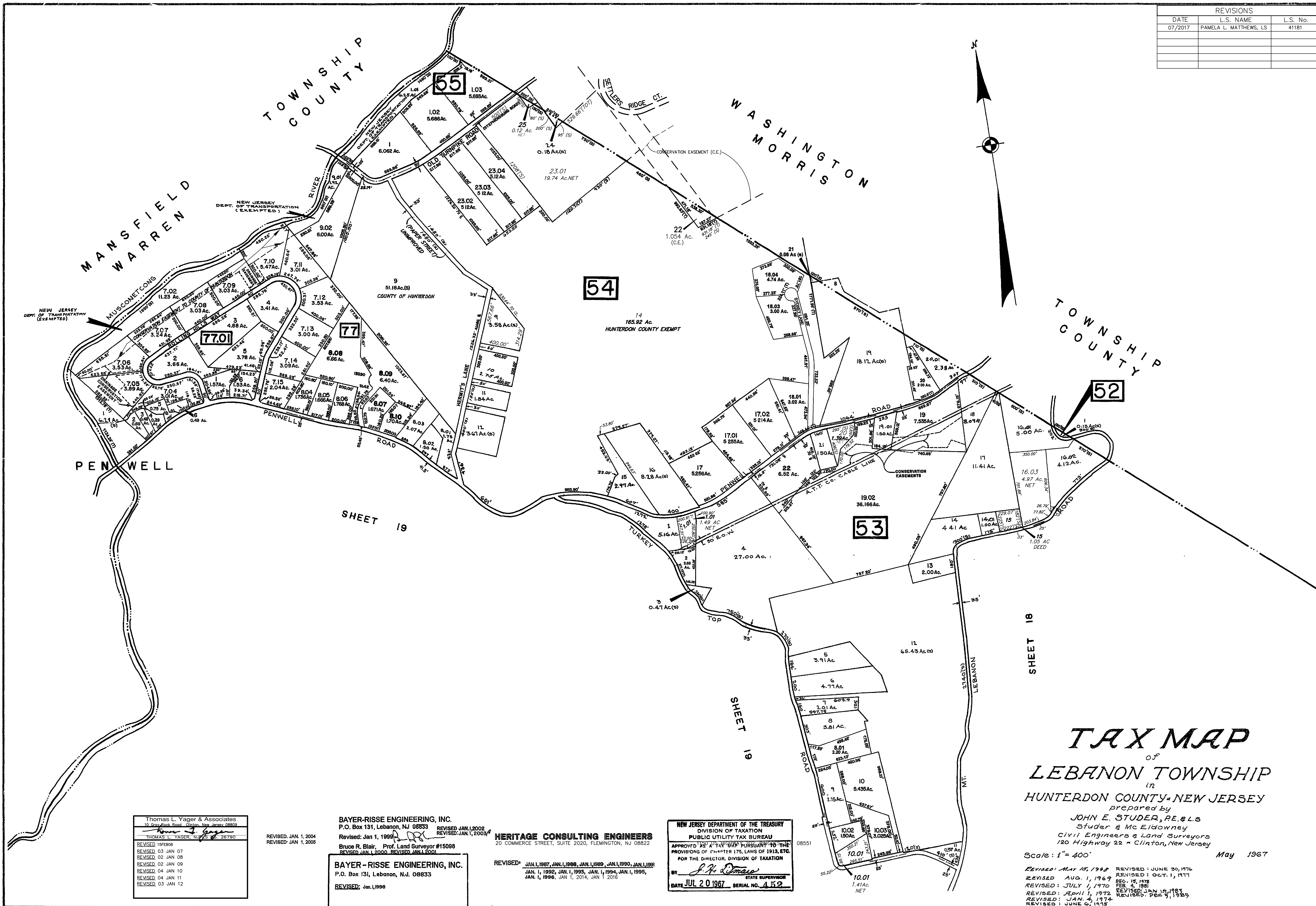


| REVISIONS | | |
|-----------|------------------------|----------|
| DATE | L.S. NAME | L.S. No. |
| 07/2017 | PAMELA L. MATTHEWS, LS | 41181 |
| | | |
| | | |
| | | |



TAX MAP
of
LEBANON TOWNSHIP
in
HUNTERDON COUNTY, NEW JERSEY
prepared by
JOHN E. STUDER, R.E. & L.S.
Studer & McEldowney
Civil Engineers & Land Surveyors
120 Highway 22 - Clinton, New Jersey
Scale: 1" = 400' May 1967

REVISED: MAY 15, 1968
REVISED: AUG. 1, 1969
REVISED: JULY 1, 1970
REVISED: APRIL 1, 1972
REVISED: JAN. 2, 1974
REVISED: JUNE 2, 1975

REVISED: JUNE 30, 1976
REVISED: OCT. 1, 1977
REVISED: DEC. 15, 1978
REVISED: FEB. 4, 1981
REVISED: JAN. 15, 1983
REVISED: DEC. 5, 1985

Thomas L. Yager & Associates
10 Gray Rock Road, Clinton, New Jersey, 08809
THOMAS L. YAGER, N.J. 26790
REVISED: 1968B6
REVISED: 03 JAN 07
REVISED: 02 JAN 08
REVISED: 02 JAN 09
REVISED: 04 JAN 10
REVISED: 04 JAN 11
REVISED: 03 JAN 12

REVISED: JAN. 1, 2004
REVISED: JAN. 1, 2005

BAYER-RISSE ENGINEERING, INC.
P.O. Box 131, Lebanon, NJ 08833
Revised: Jan 1, 1998
BAYE-RISSE ENGINEERING, INC.
P.O. Box 131, Lebanon, N.J. 08833
REVISED: Jan. 1, 1998

HERITAGE CONSULTING ENGINEERS
20 COMMERCE STREET, SUITE 2020, FLEMINGTON, NJ 08822
REVISED: JAN. 1, 2003
REVISED: JAN. 1, 2004
REVISED: JAN. 1, 2005
REVISED: JAN. 1, 2006
REVISED: JAN. 1, 2007

NEW JERSEY DEPARTMENT OF THE TREASURY
DIVISION OF TAXATION
PUBLIC UTILITY TAX BUREAU
APPROVED AS A TAX MAP PURSUANT TO THE
PROVISIONS OF CHAPTER 175, LAWS OF 1913, ETC.
FOR THE DIRECTOR, DIVISION OF TAXATION
BY: *P. H. Dumas*
STATE SUPERVISOR
DATE: JUL 20 1967 SERIAL NO. 452