

SHEET 16

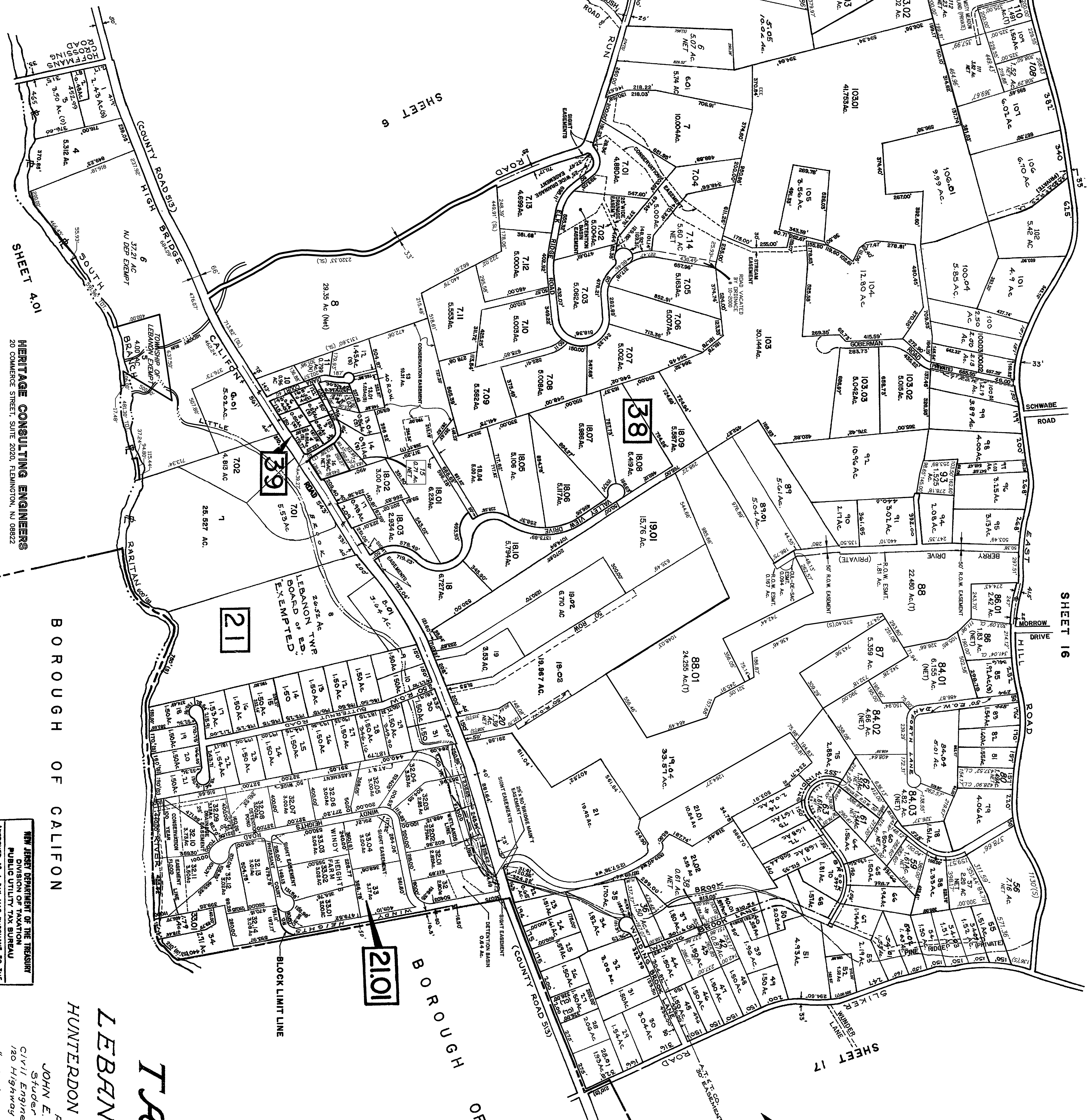
SHEET 16

SHEET 17

SHEET 6

SHEET 6

SHEET 3



BOROUGH OF CALIFON

BOROUGH OF CALIFON

TAX MAP
 OF
LEBANON TOWNSHIP
 HUNTERDON COUNTY, NEW JERSEY

Prepared by
JOHN E. STUDDER, P.E. & S.

Studer & McElroy
Civil Engineers & Land Surveyors
120 Highway 28 - Clinton, New Jersey

Scale: 1" = 400'

Revised: May 15, 1988
 Revised: Aug 1, 1989
 Revised: July 1, 1970
 Revised: Jan 1, 1972
 Revised: Jan 1, 1974
 Revised: Jan 1, 1975

Revised: June 30, 1976
 Revised: Oct. 1, 1977
 Revised: Jan 2, 1980
 Revised: Feb 4, 1981
 Revised: Sep 15, 1983

May 1987

NEW JERSEY DEPARTMENT OF THE TREASURY
 DIVISION OF TAXATION
 PUBLIC UTILITY TAX BUREAU
 APPROVED AS A TAX MAP PRESENT TO THE
 COMMISSIONERS OF TAXATION
 FROM THE DIVISION OF TAXATION
 DATE: JUL 20 1987 SERIAL NO. 432

HERITAGE CONSULTING ENGINEERS
20 COMMERCE STREET, SUITE 202A, FLEMINGTON, NJ 08822

BAYER-RISSE ENGINEERING, INC.
P.O. Box 131, Lebanon, N.J. 08833

Revised: Jan. 1, 2004
 Revised: Jan. 1, 2005

Revised: Jan. 1, 2004
 Revised: Jan. 1, 2005

Revised: Jan. 1, 2000
 Revised: Jan. 1, 2003

Revised: Jan. 1, 1998

Thomas L. Vager & Associates
 1000 Rock Road, Suite 200, Lebanon, NJ 08833
 Phone: (609) 271-2070

Revised: 03 JAN 07
 Revised: 02 JAN 08
 Revised: 04 JAN 09
 Revised: 04 JAN 10
 Revised: 03 JAN 11