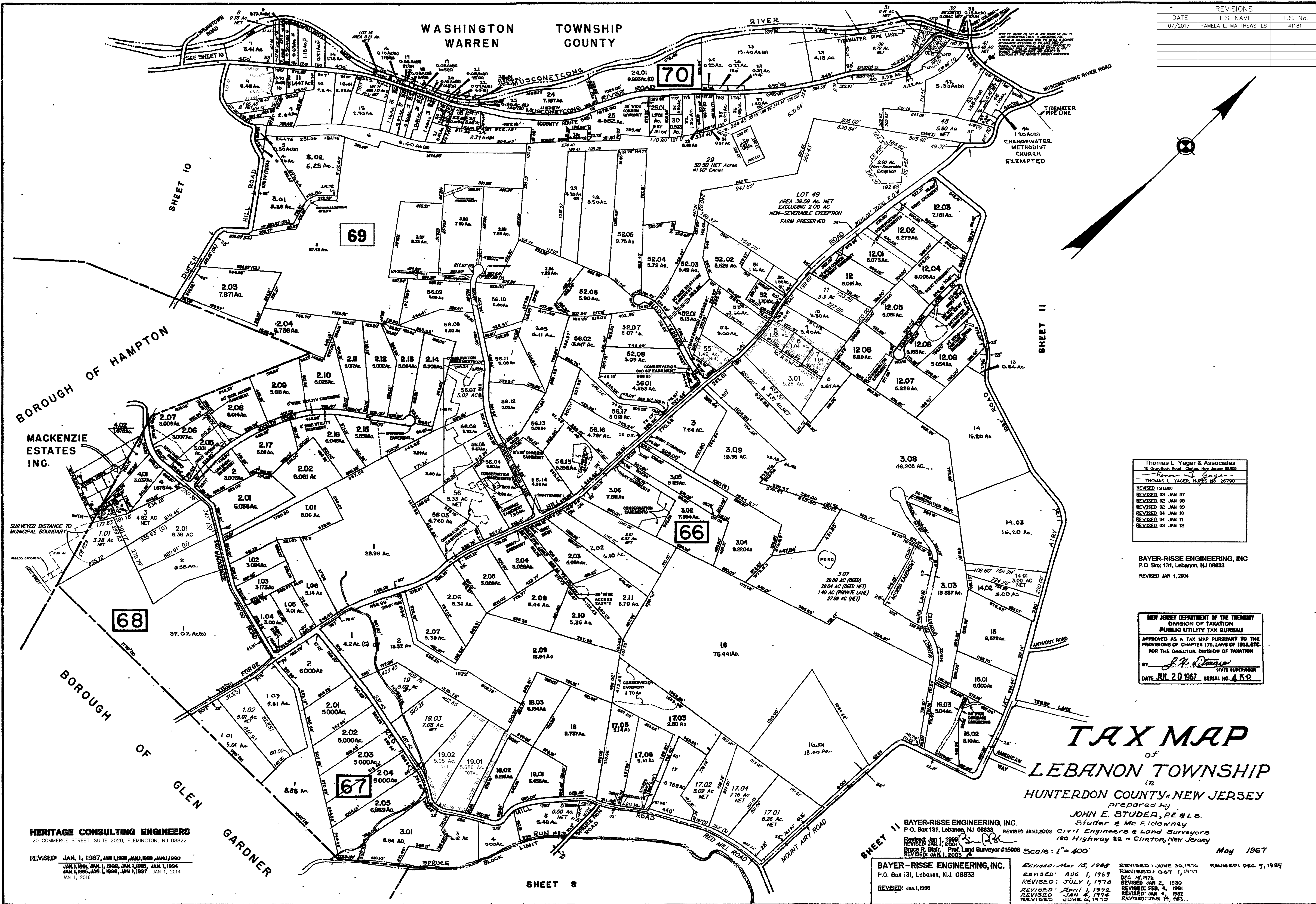


REVISIONS		
DATE	L.S. NAME	L.S. No.
07/2017	PAMELA L. MATTHEWS, LS	41181



Thomas L. Yager & Associates  
 10 Gray Rock Road, Clinton, New Jersey 08809  
 Thomas L. Yager, N.J.S. 26780  
 Revised: 199606  
 Revised 03 JAN 07  
 Revised 02 JAN 08  
 Revised 02 JAN 09  
 Revised 04 JAN 10  
 Revised 04 JAN 11  
 Revised 03 JAN 12

BAYER-RISSE ENGINEERING, INC.  
 P.O. Box 131, Lebanon, NJ 08833  
 Revised JAN 1, 2004

NEW JERSEY DEPARTMENT OF THE TREASURY  
 DIVISION OF TAXATION  
 PUBLIC UTILITY TAX BUREAU  
 APPROVED AS A TAX MAP PURSUANT TO THE  
 PROVISIONS OF CHAPTER 176, LAWS OF 1918, ETC.  
 FOR THE DIRECTOR, DIVISION OF TAXATION  
 BY: J. A. Romano, STATE SUPERVISOR  
 DATE: JUL 20 1967, SERIAL NO. 452

# TAX MAP

of

## LEBANON TOWNSHIP

HUNTERDON COUNTY, NEW JERSEY

prepared by  
**JOHN E. STUDER, P.E. & L.S.**  
 Studer & McEldowney  
 Civil Engineers & Land Surveyors  
 120 Highway 22 • Clinton, New Jersey  
 May 1967

BAYER-RISSE ENGINEERING, INC.  
 P.O. Box 131, Lebanon, NJ 08833  
 Revised JAN 1, 2004  
 Revised JAN 1, 2005  
 Bruce F. Blair, Prof. Land Surveyor #15096  
 Revised JAN 1, 2005

BAYER-RISSE ENGINEERING, INC.  
 P.O. Box 131, Lebanon, N.J. 08833  
 Revised: Jan. 1, 1988

Revised: May 15, 1968  
 Revised: AUG 1, 1967  
 Revised: JULY 1, 1970  
 Revised: April 1, 1972  
 Revised: JAN 4, 1974  
 Revised: JUNE 2, 1975  
 Revised: JUNE 30, 1976  
 Revised: OCT 1, 1977  
 Revised: DEC 15, 1978  
 Revised: FEB 4, 1981  
 Revised: JAN 4, 1982  
 Revised: JAN 14, 1983

HERITAGE CONSULTING ENGINEERS  
 20 COMMERCE STREET, SUITE 2020, FLEMINGTON, NJ 08822  
 Revised: JAN 1, 1987, JAN 1, 1988, JAN 1, 1989, JAN 1, 1990  
 JAN 1, 1991, JAN 1, 1992, JAN 1, 1993, JAN 1, 1994  
 JAN 1, 1995, JAN 1, 1996, JAN 1, 1997, JAN 1, 2014  
 JAN 1, 2016