

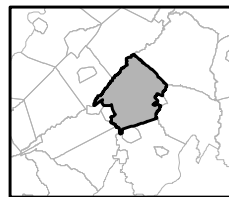
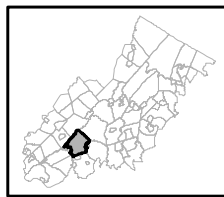
Exhibit A: Highlands Master Plan Element



Regional Master Plan Overlay Zone Designation

- |                 |  |                             |
|-----------------|--|-----------------------------|
| <b>Zone</b>     | Protection                                     | Lakes Greater Than 10 acres |
|                 | Conservation                                   | Preservation Area           |
|                 | Existing Community                             | Municipal Boundaries        |
| <b>Sub-Zone</b> | Existing Community Environmentally Constrained |                             |
|                 | Conservation Environmentally Constrained       |                             |
|                 | Lake Community                                 |                             |
|                 | Wildlife Management                            |                             |

Lebanon Township

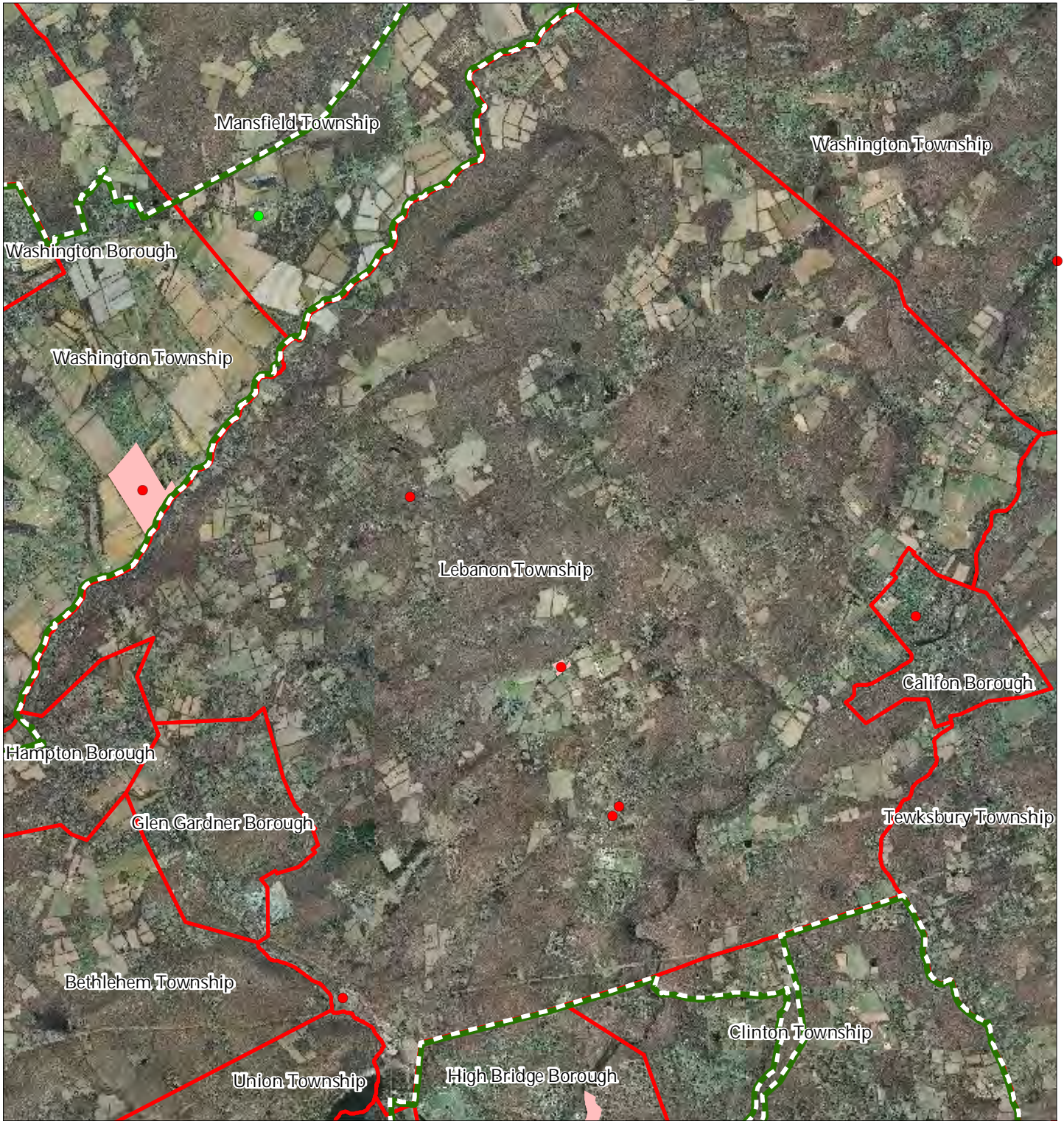


1 inch = 0.968 miles



December 2011

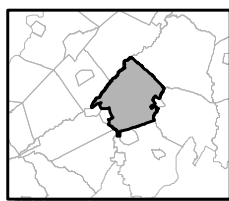
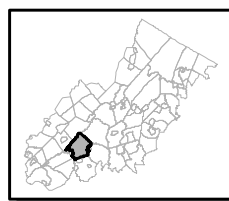
# Exhibit C: Highlands Contaminated Site Inventory



Highlands Contaminated Site Inventory

Lebanon Township

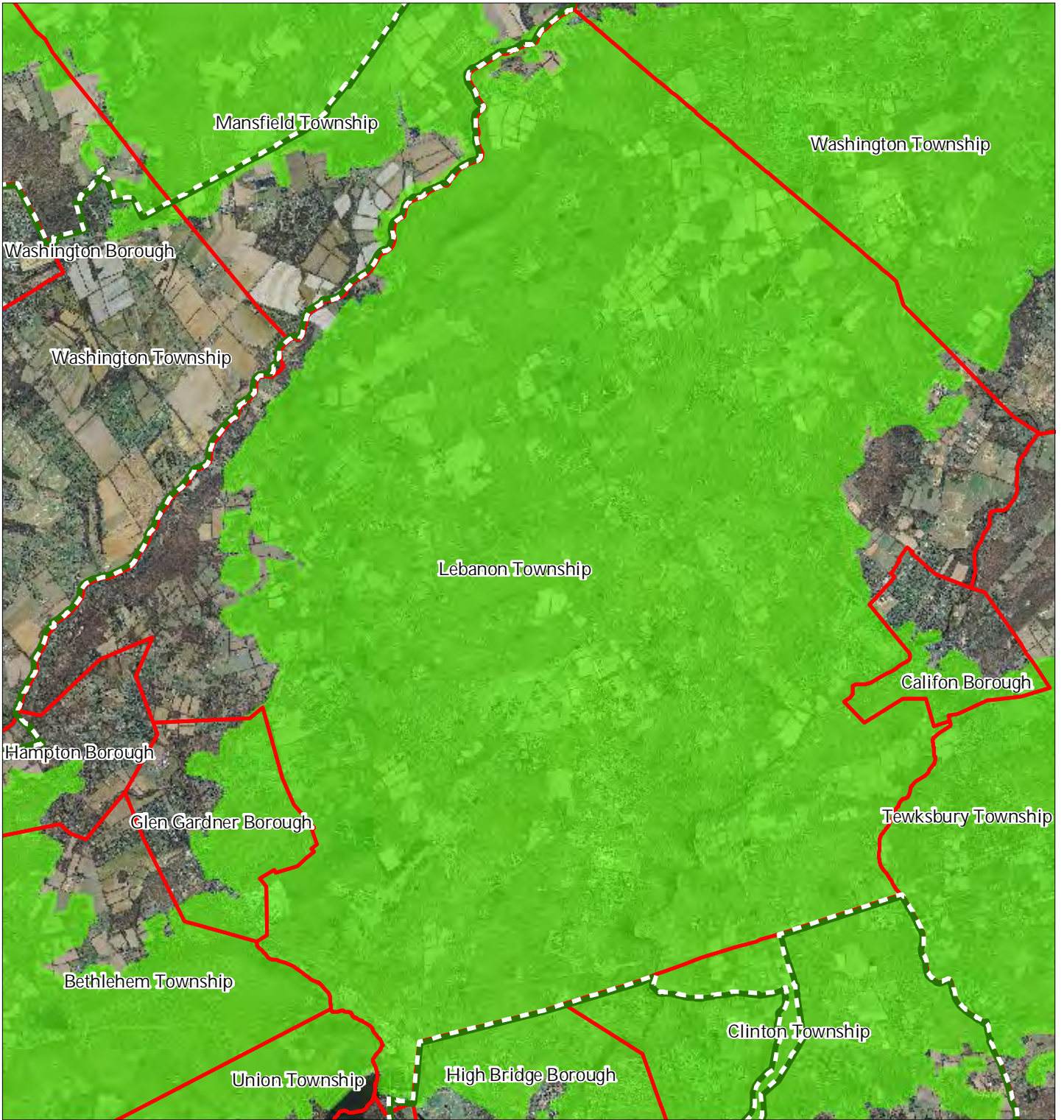
- Tier 1 Sites
- Tier 1 Sites (Polygons)
- Tier 2 Sites
- Preservation Area
- Municipal Boundaries






1 inch = 0.968 miles

N

# Exhibit E: Forest Resource Area



-  Forest Resource Area
-  Preservation Area
-  Municipal Boundaries

## Lebanon Township






1 inch = 0.968 miles



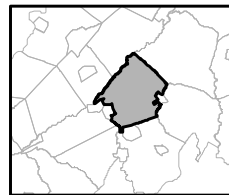
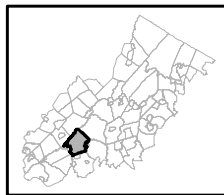
December 2011

# Exhibit F: Total Forest Area



-  Forested Areas
-  Preservation Area
-  Municipal Boundaries

## Lebanon Township

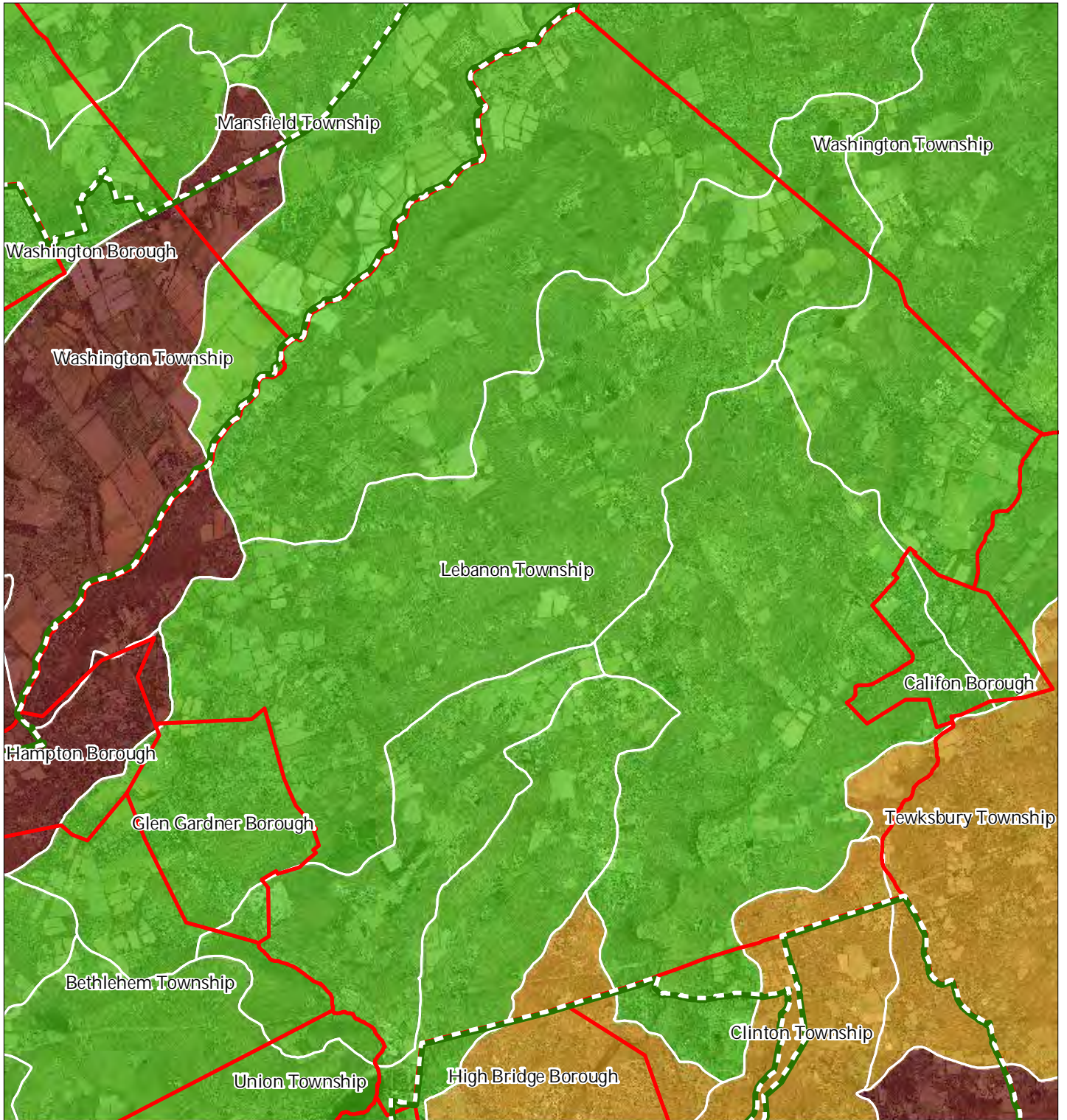


1 inch = 0.968 miles








December 2011

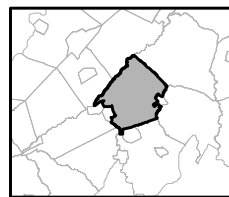
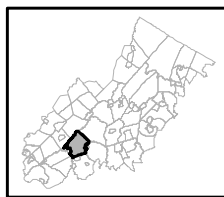
# Exhibit G: Forest Subwatersheds



Forest Integrity by HUC14 Subwatershed

-  *Low*
-  *Moderate*
-  *High*
-  Preservation Area
-  Municipal Boundaries

## Lebanon Township

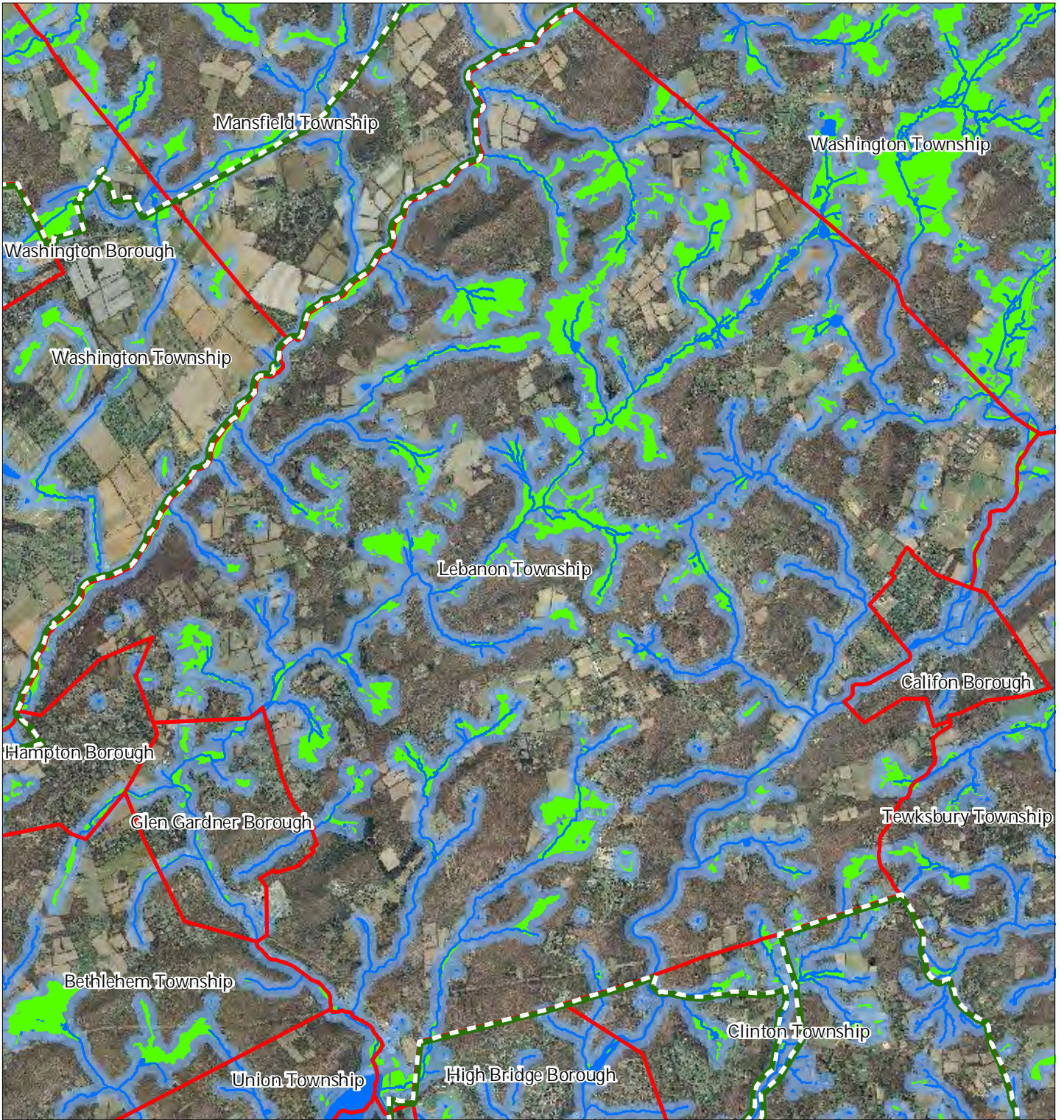


1 inch = 0.968 miles



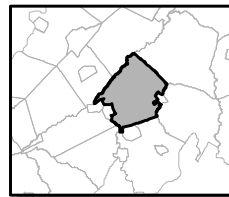
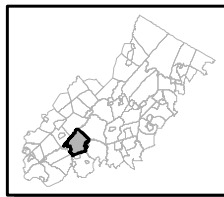
December 2011

# Exhibit H: Highlands Open Waters



-  Highlands Open Water Buffers (300ft)
-  Streams
-  Wetlands
-  Lakes & Ponds
-  Preservation Area
-  Municipal Boundaries

## Lebanon Township

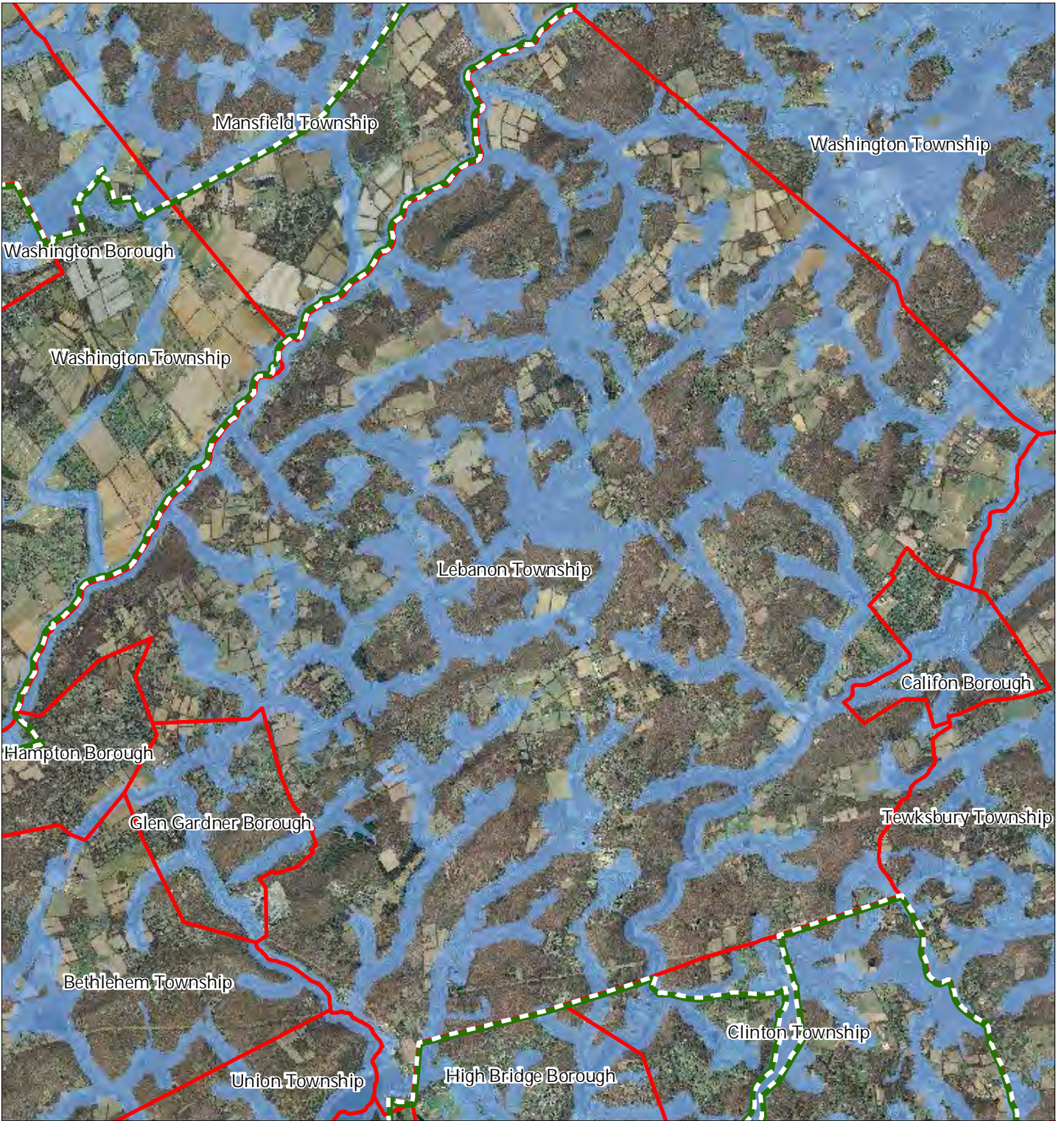


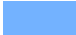


1 inch = 0.968 miles



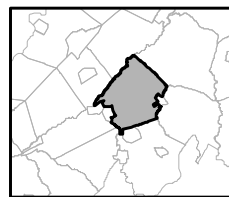
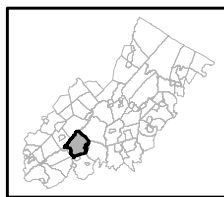
December 2011

# Exhibit I: Highlands Riparian Areas



-  Riparian Area
-  Preservation Area
-  Municipal Boundaries

## Lebanon Township

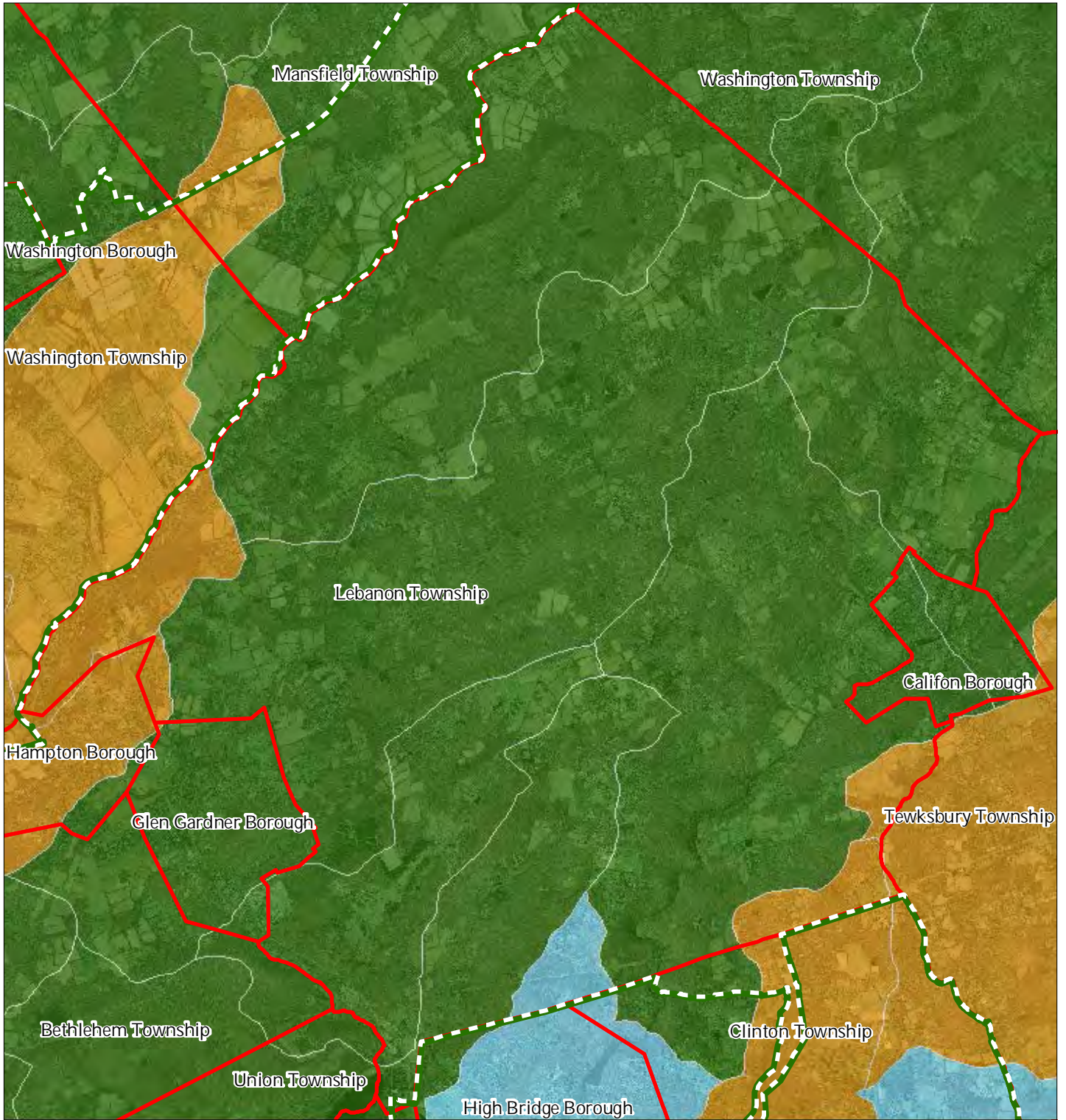


1 inch = 0.968 miles



December 2011

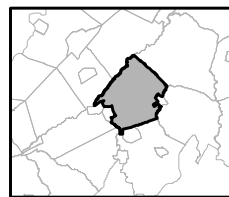
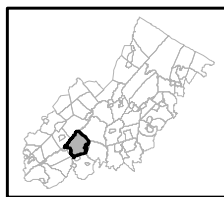
# Exhibit J: Watershed Values



Watershed Values by HUC14 Subwatershed

- Low*
- Moderate*
- High*
- Preservation Area
- Municipal Boundaries

## Lebanon Township

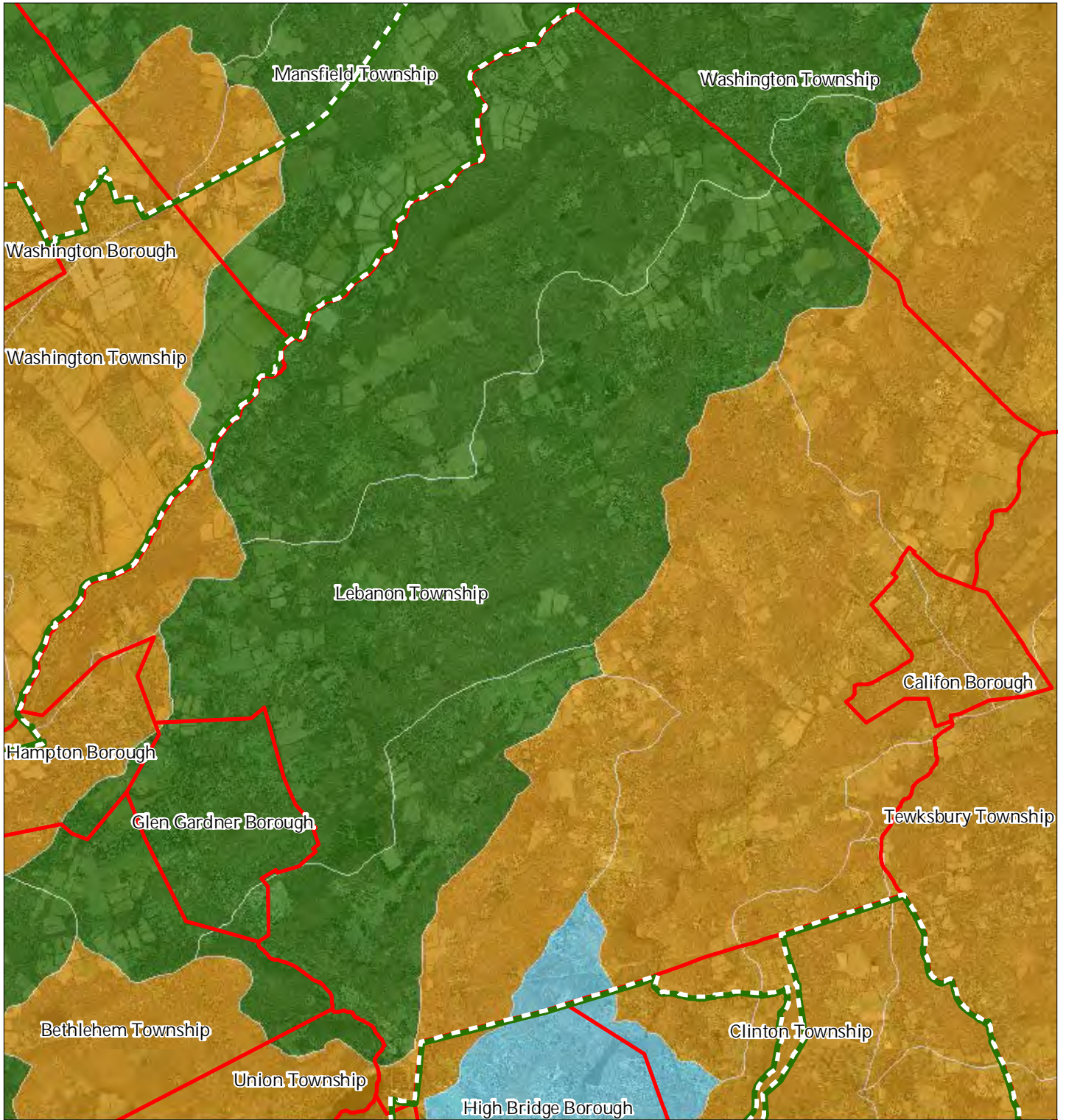


1 inch = 0.968 miles

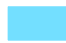








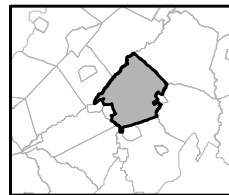
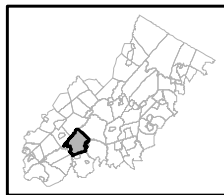
# Exhibit K: Riparian Integrity



Riparian Integrity by HUC14 Subwatershed

-  *Low*
-  *Moderate*
-  *High*
-  Preservation Area
-  Municipal Boundaries

## Lebanon Township

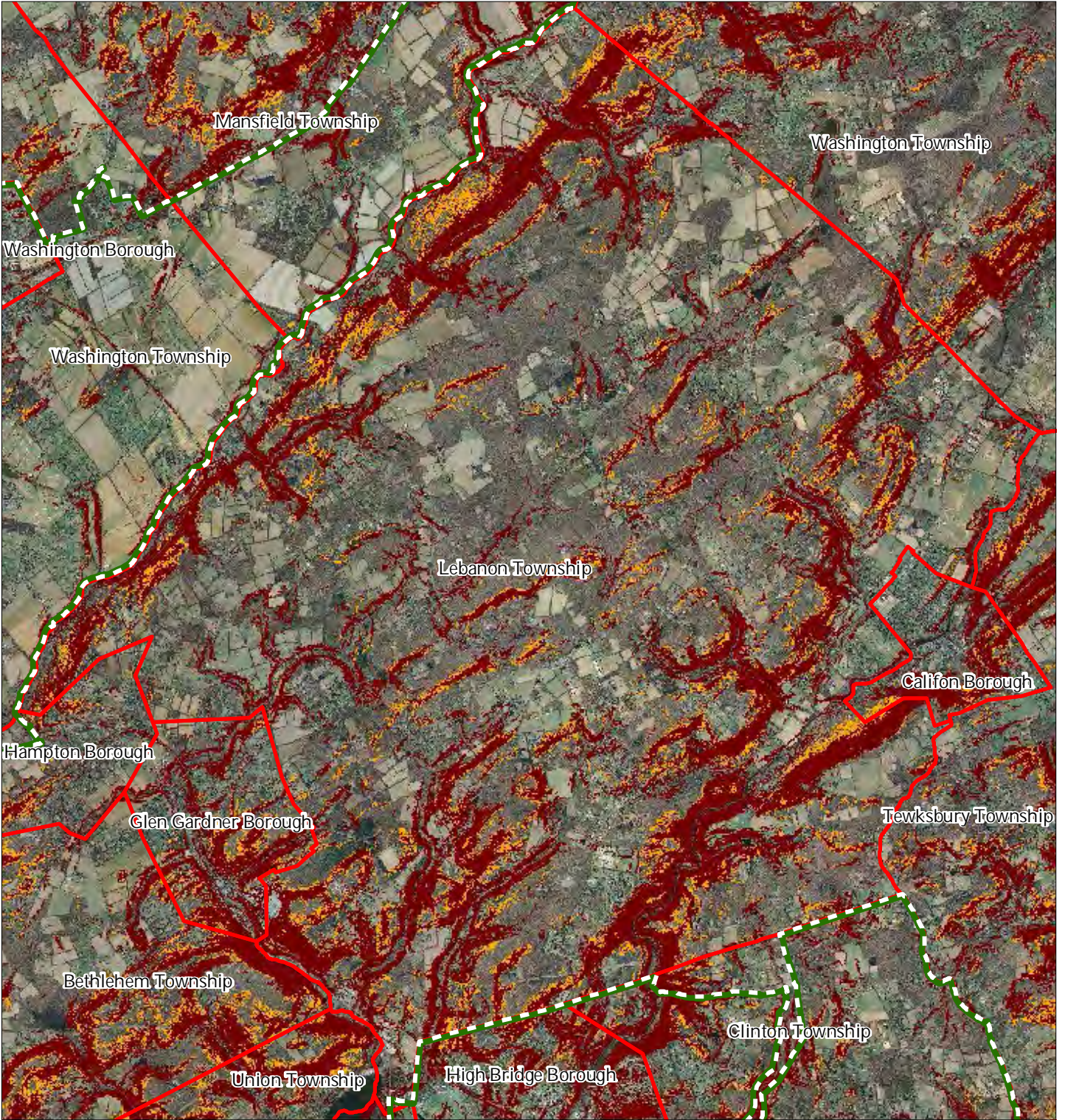


1 inch = 0.968 miles







December 2011

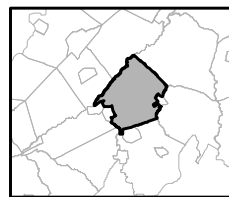
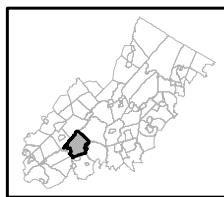
# Exhibit L: Steep Slope Protection Areas



### Steep Slopes

-  Moderate
-  Severe
-  Preservation Area
-  Municipal Boundaries

## Lebanon Township

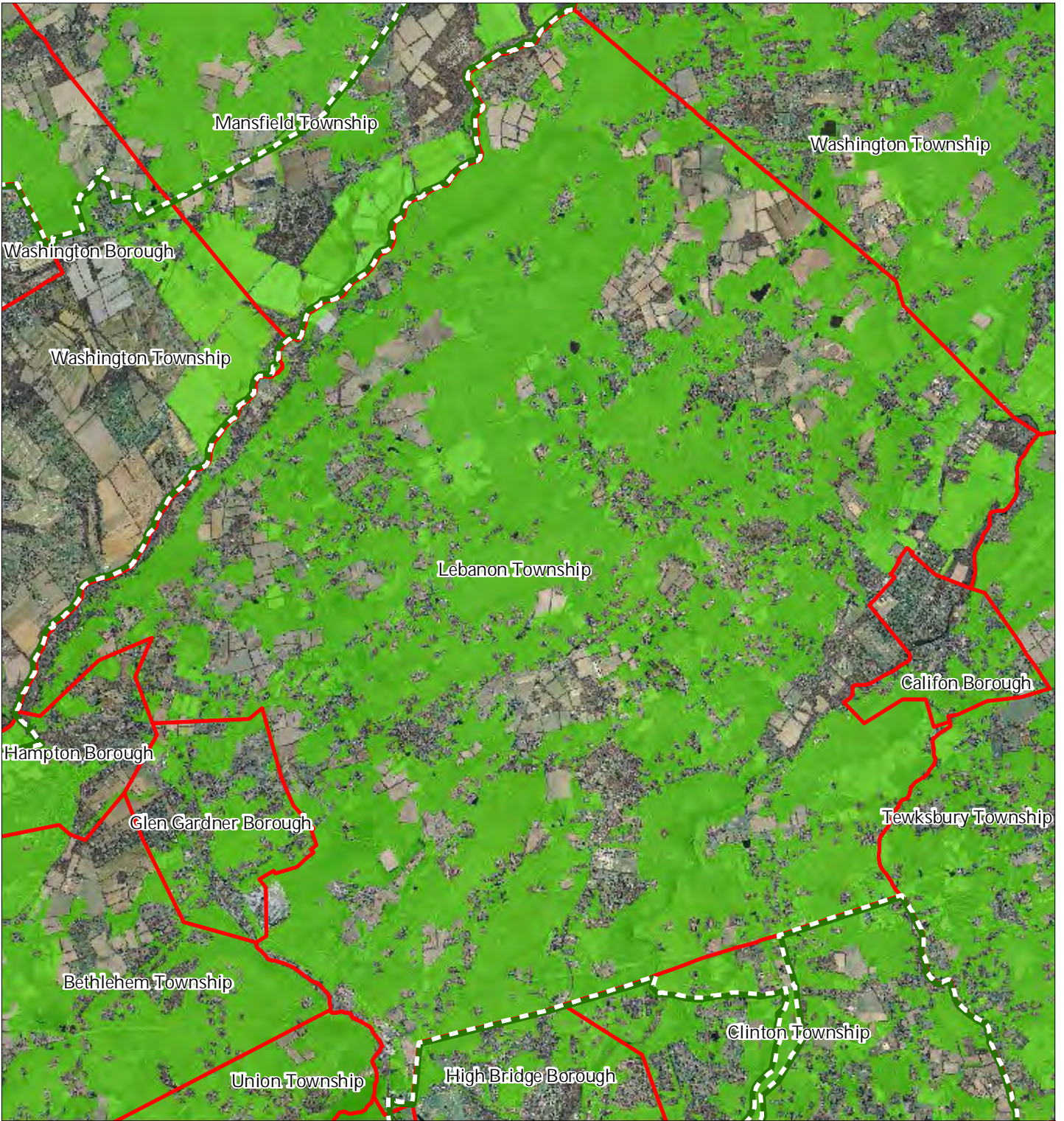





1 inch = 0.968 miles



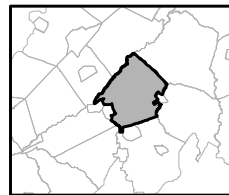
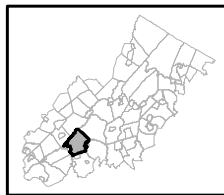
December 2011

# Exhibit M: Critical Wildlife Habitat



-  Critical Wildlife Habitat
-  Preservation Area
-  Municipal Boundaries

## Lebanon Township

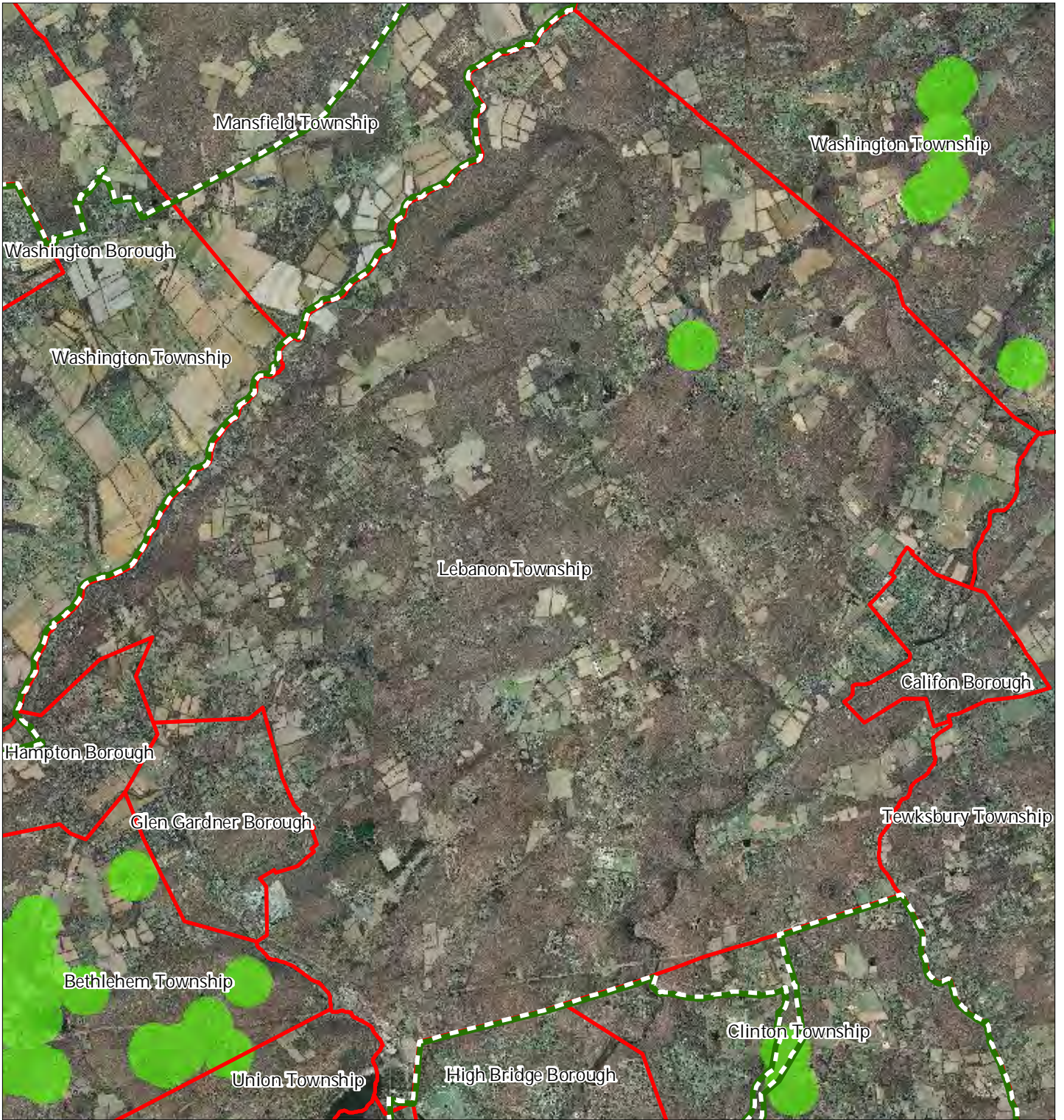





1 inch = 0.968 miles



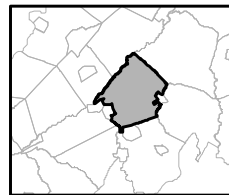
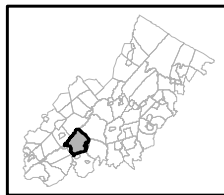
December 2011

# Exhibit O: Vernal Pools



-  Vernal Pools + 1000ft Buffer
-  Preservation Area
-  Municipal Boundaries

## Lebanon Township

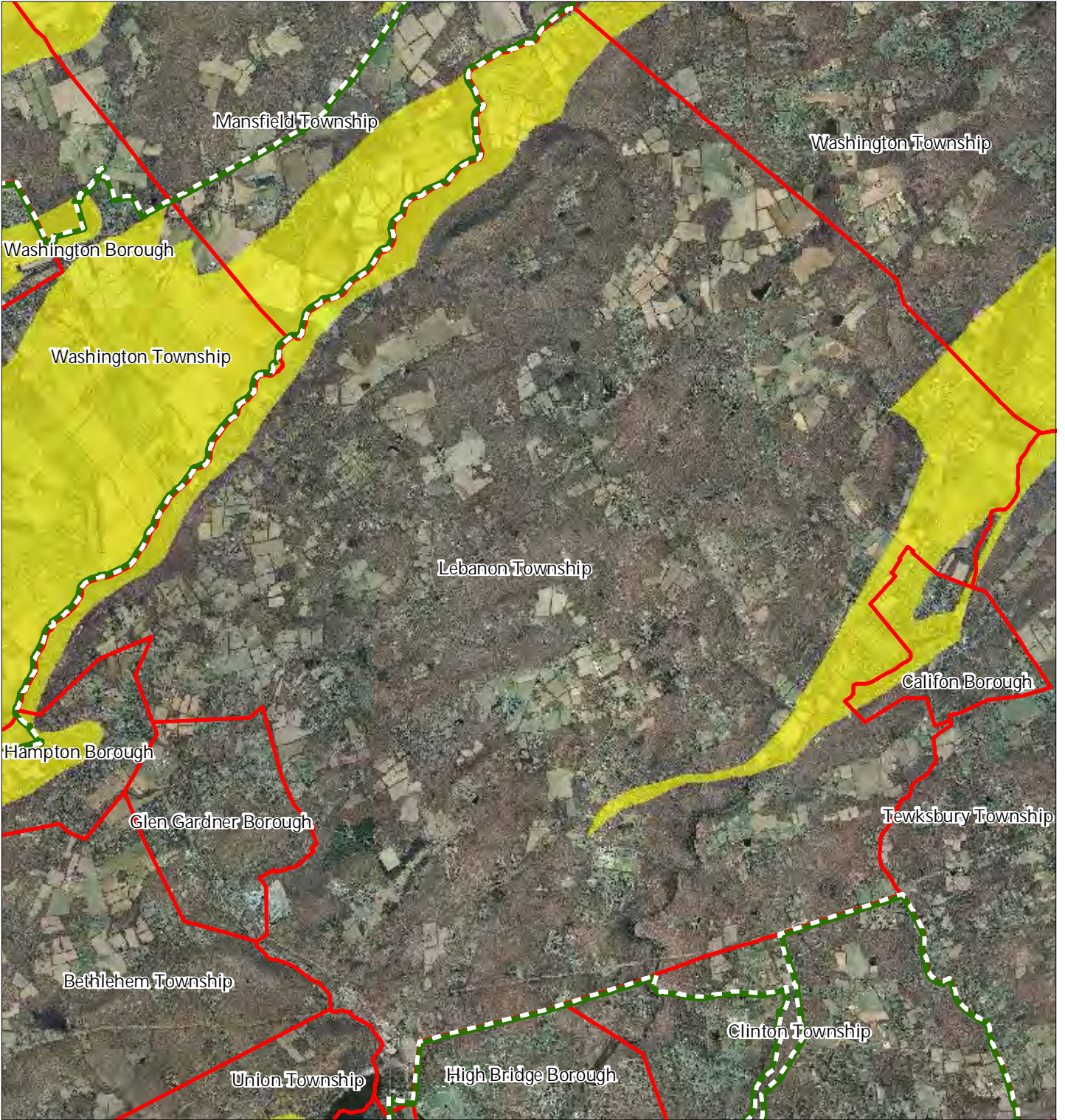





1 inch = 0.968 miles



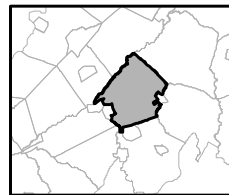
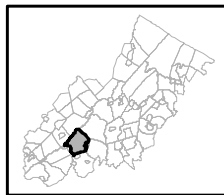
December 2011

# Exhibit P: Carbonate Rock Areas



-  Carbonate Rock Area
-  Preservation Area
-  Municipal Boundaries

## Lebanon Township

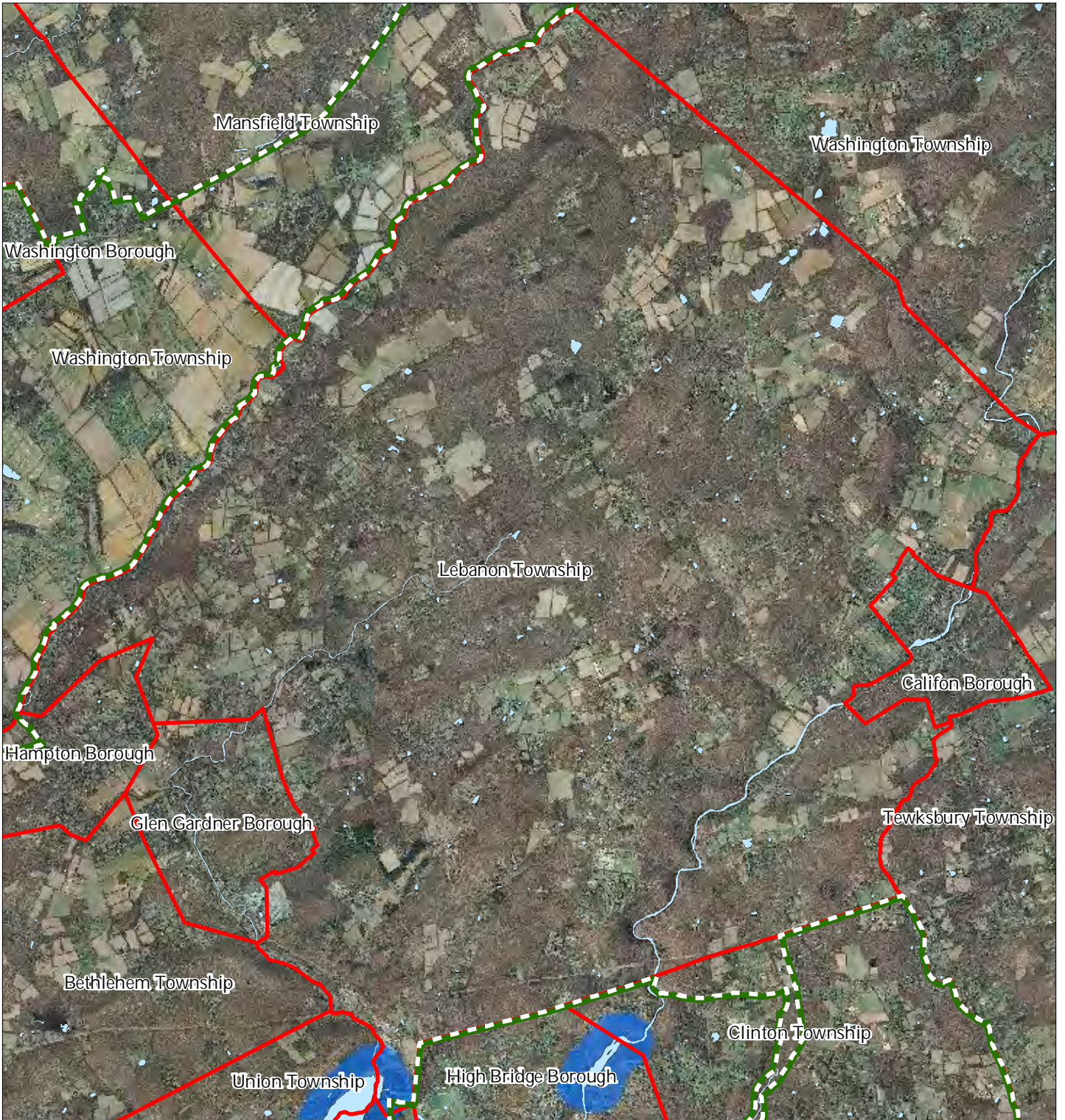


1 inch = 0.968 miles



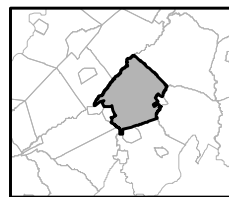
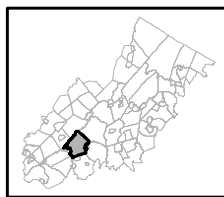
December 2011

# Exhibit Q: Lake Management Area



- Lakes & Ponds
- Lake Management Area
- Preservation Area
- Municipal Boundaries

## Lebanon Township

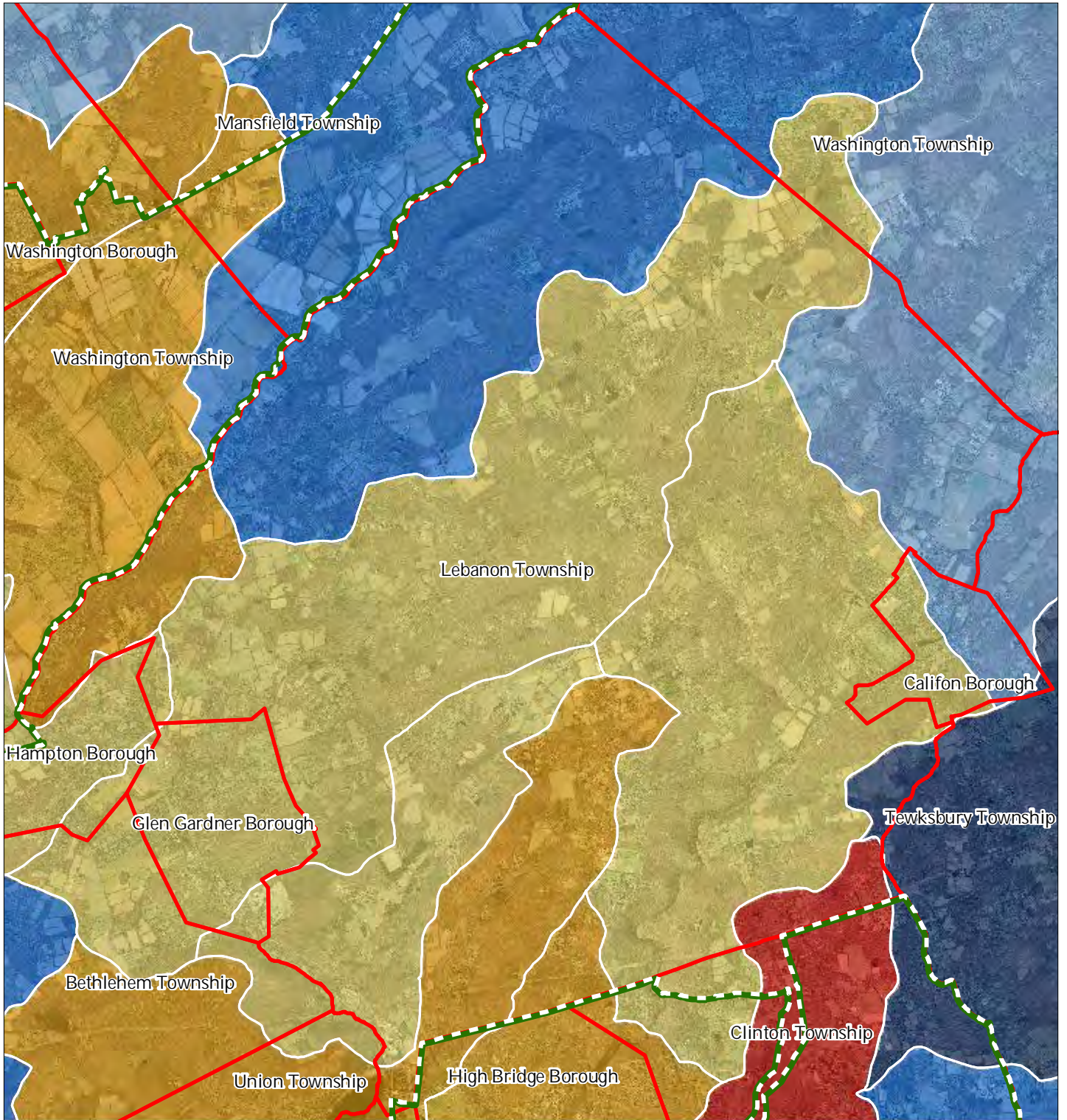


1 inch = 0.968 miles



December 2011

# Exhibit R: Net Water Availability



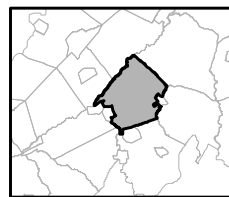
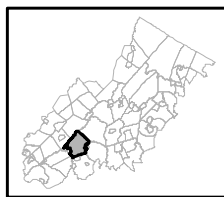
Net Water Availability By HUC14

Million Gallons Per Day (MGD)

- 0.10 - 0.39
- 0.05 - 0.09
- 0.00 - 0.04
- 0.09 - 0.00
- 0.99 - -0.10
- 7.10 - -1.00

- Preservation Area
- Municipal Boundaries

## Lebanon Township

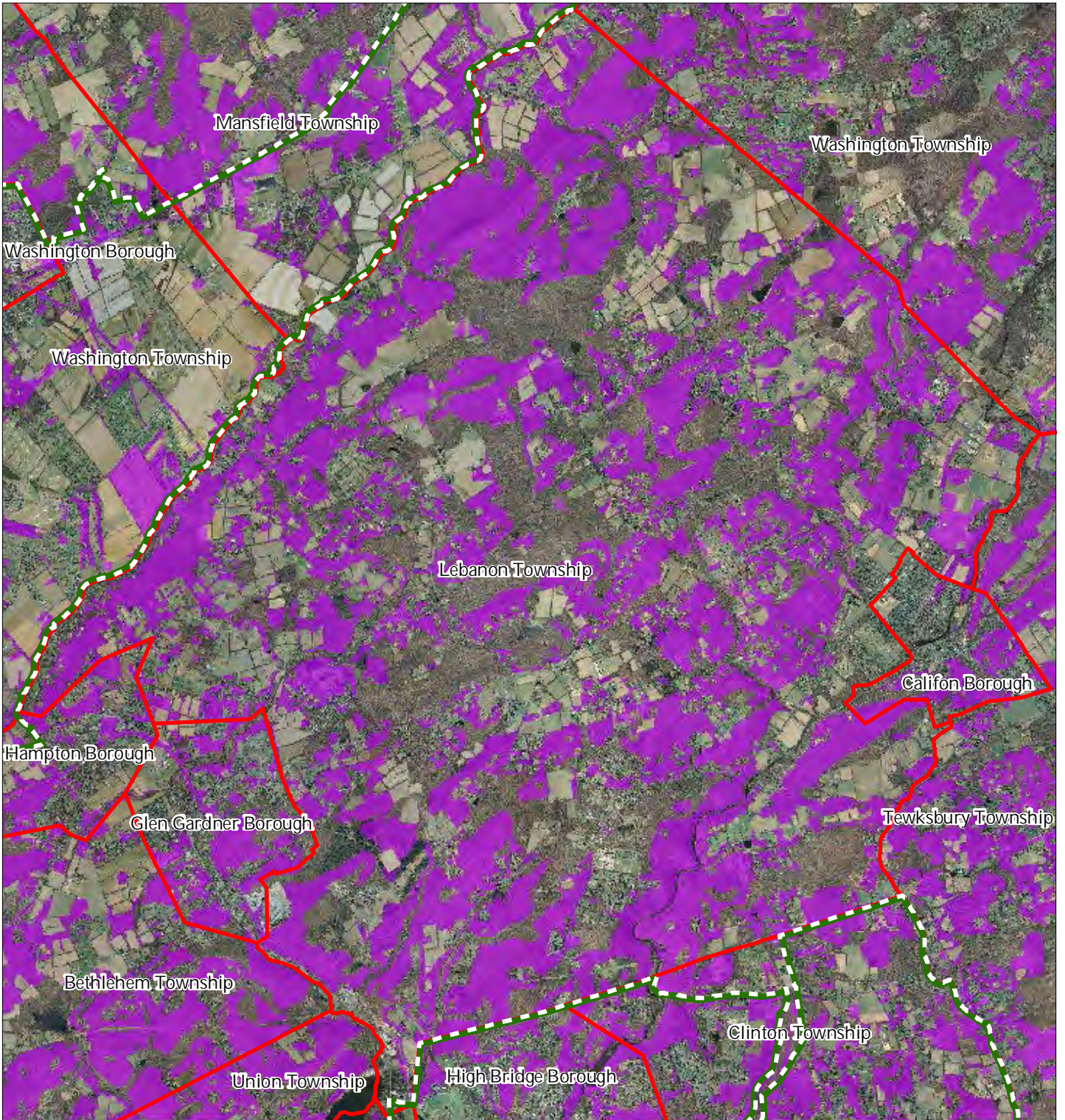





1 inch = 0.968 miles



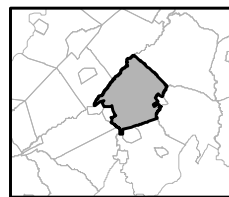
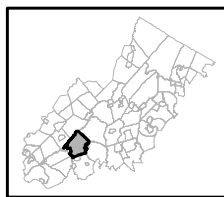
December 2011

# Exhibit S: Prime Ground Water Recharge Areas



-  Prime Groundwater Recharge Areas
-  Preservation Area
-  Municipal Boundaries

## Lebanon Township



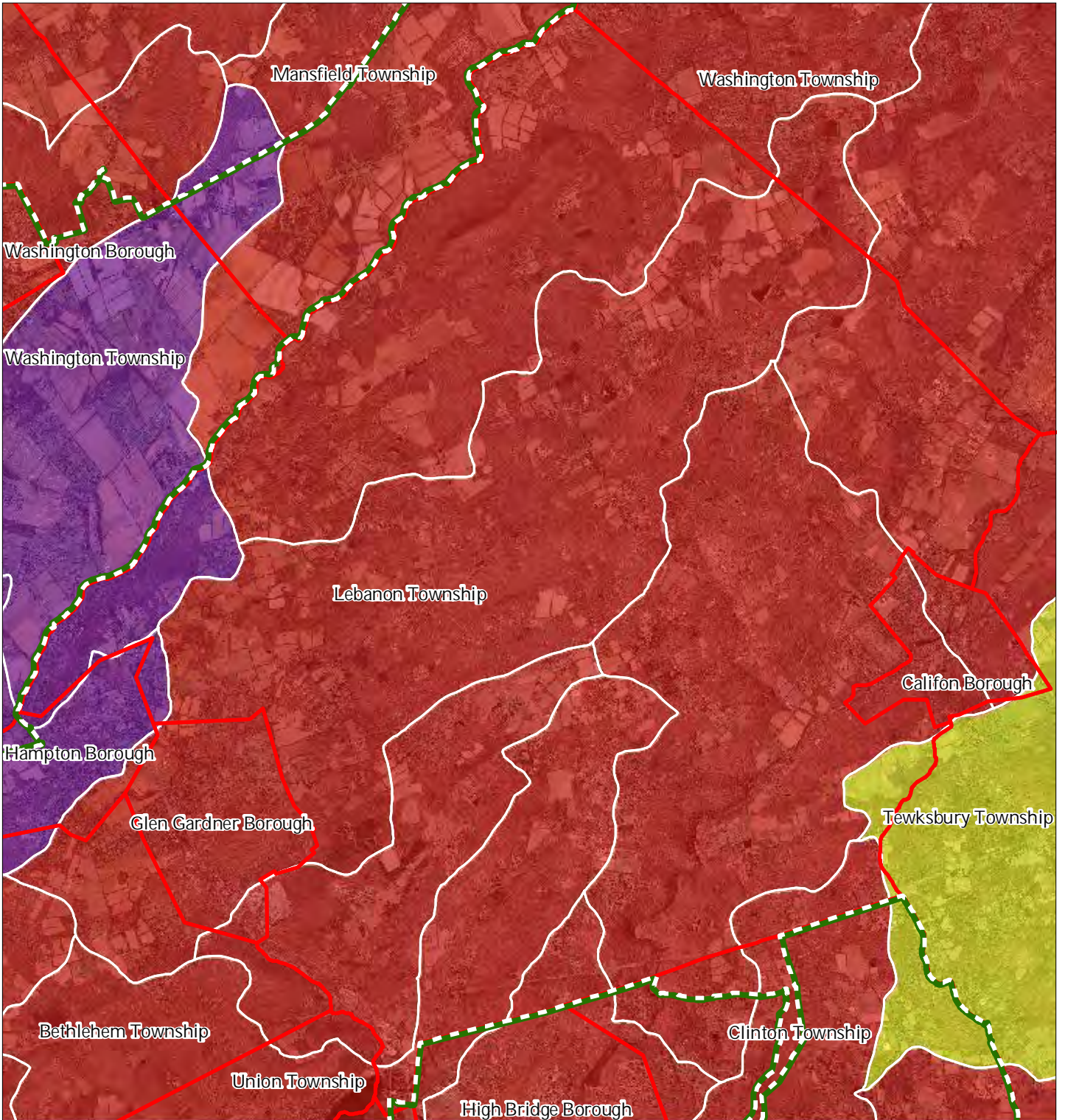
1 inch = 0.968 miles



December 2011



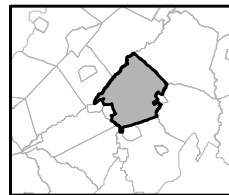
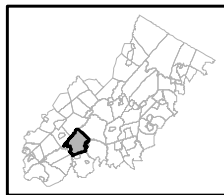
# Exhibit T: HUC 14s on NJDEP Impaired Waters List



## Lebanon Township

Impaired Waters Overall Assessment by HUC14 Subwatershed

- Non Impacted*
- Insufficient Data Available*
- Moderate*
- Water Quality Impaired*
- Preservation Area
- Municipal Boundaries

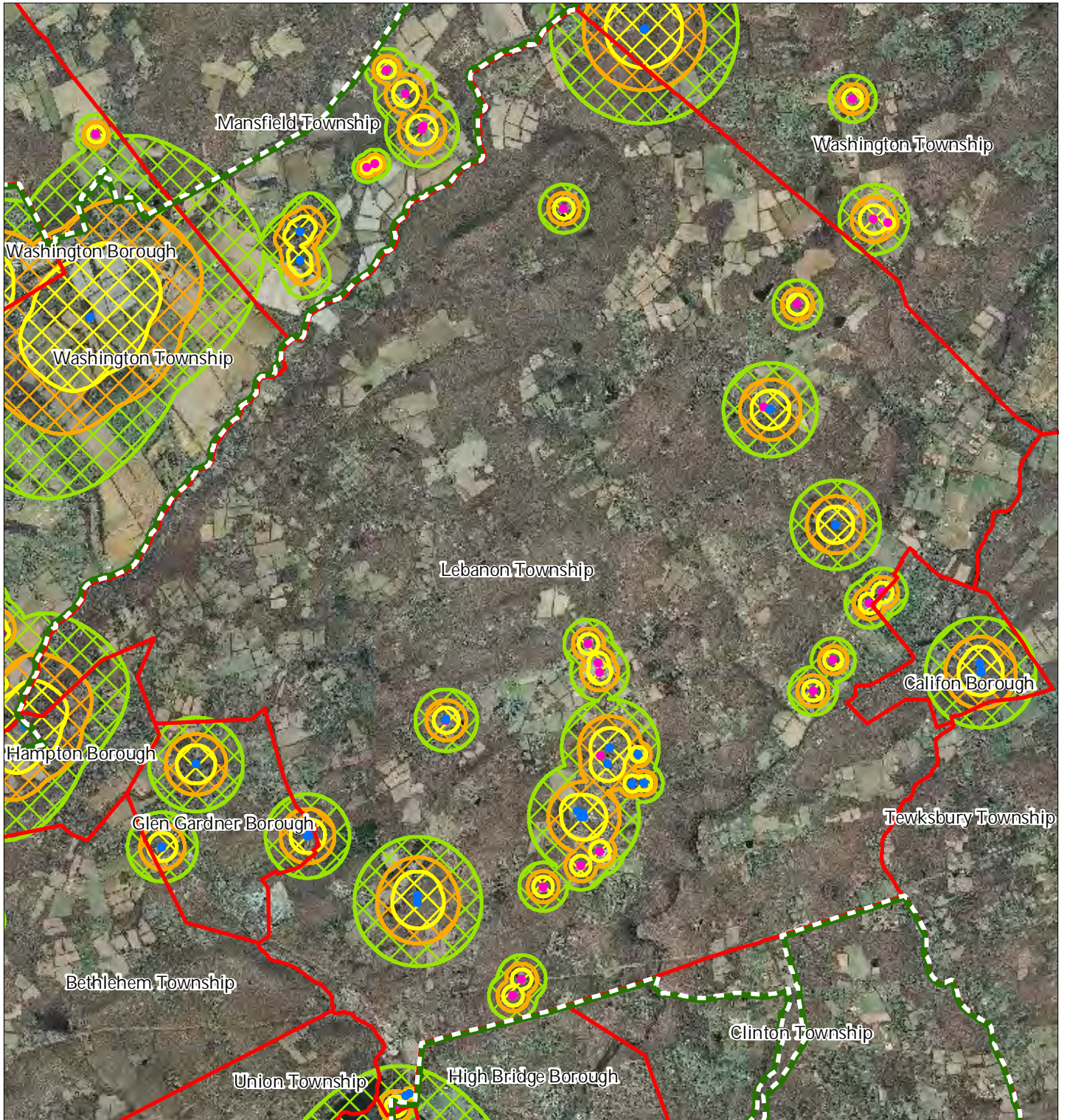


1 inch = 0.968 miles



December 2011

# Exhibit U: Wellhead Protection Areas



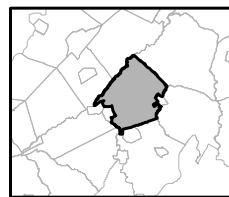
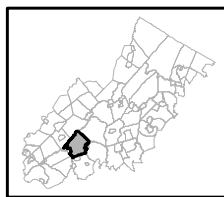
- Public Community Wells
- Public Non-Community Wells

**Wellhead Protection Areas**

- 2-Year Tier
- 5-Year Tier
- 12-Year Tier

- Preservation Area
- Municipal Boundaries

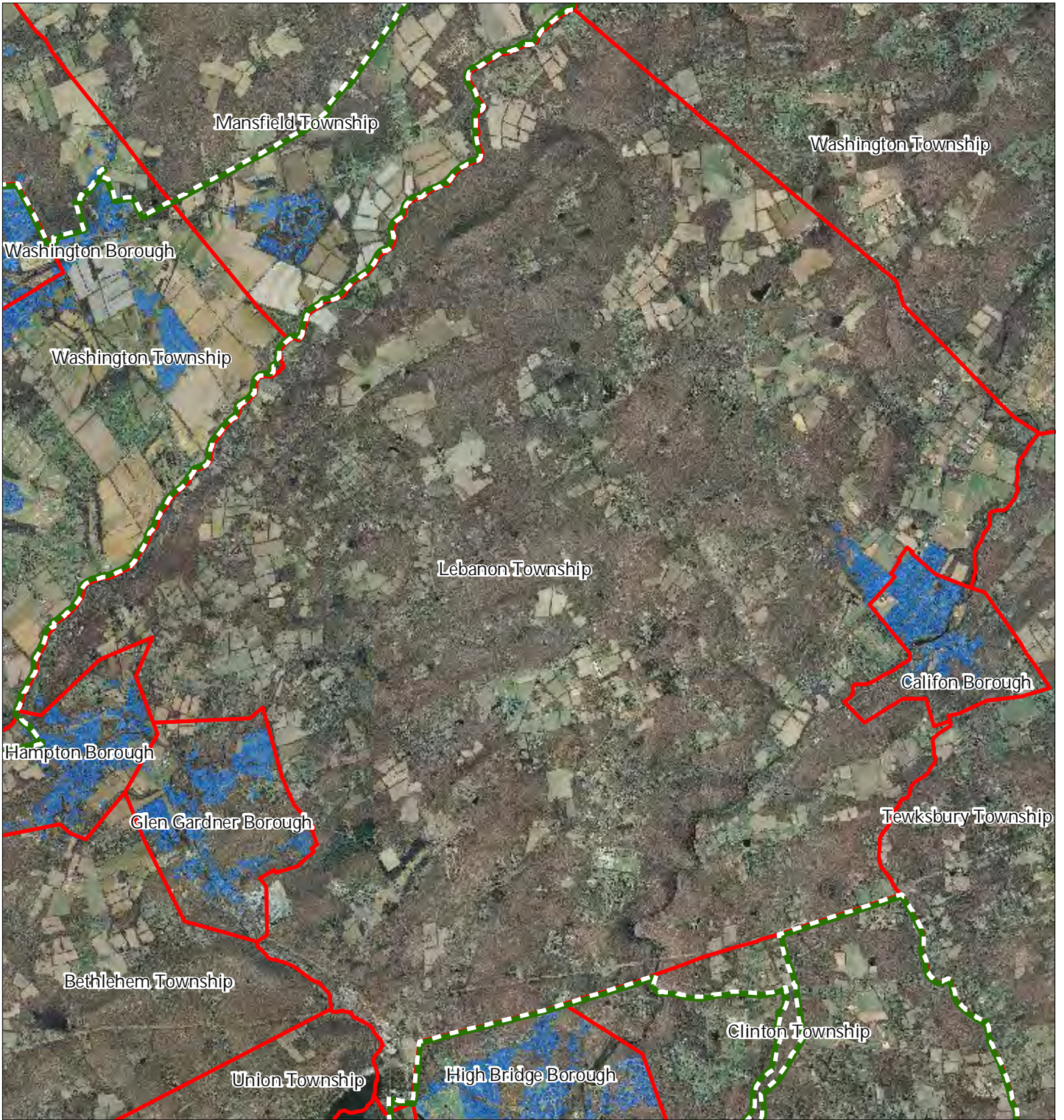
## Lebanon Township






1 inch = 0.968 miles

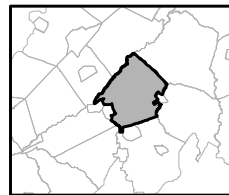
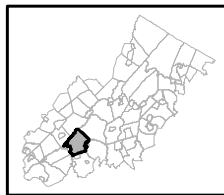


# Exhibit V: Public Community Water Systems



-  Public Community Water Systems
-  Preservation Area
-  Municipal Boundaries

## Lebanon Township

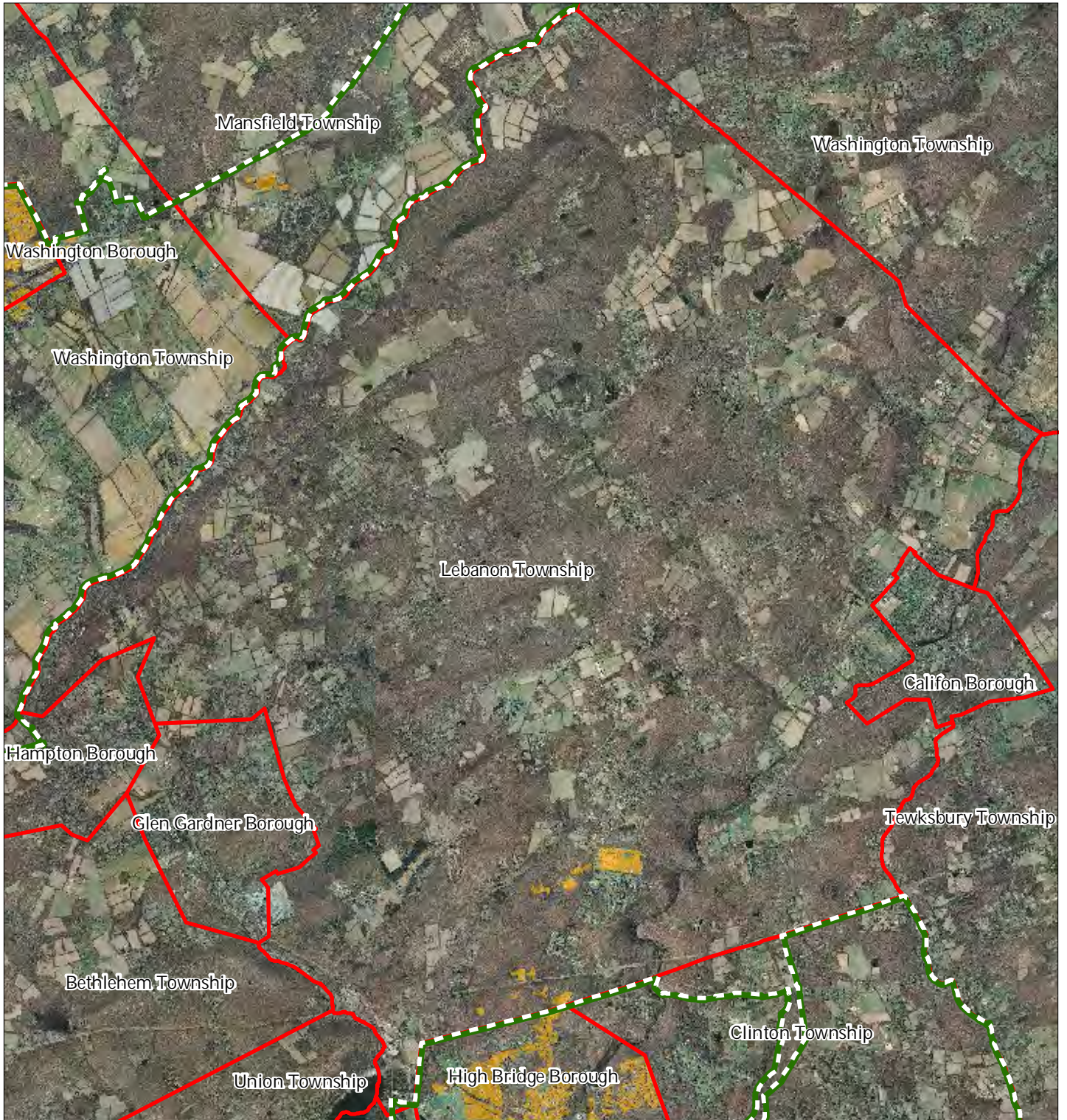


1 inch = 0.968 miles






December 2011

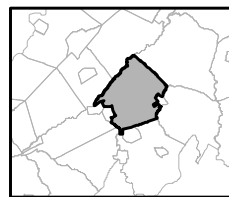
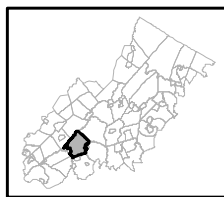
# Exhibit W: Highlands Domestic Sewerage Facilities



Highlands Domestic Sewerage Facilities

-  Existing Area Served
-  Preservation Area
-  Municipal Boundaries

## Lebanon Township



1 inch = 0.968 miles



December 2011

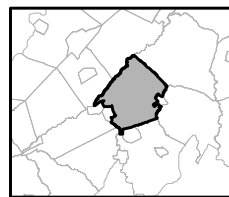
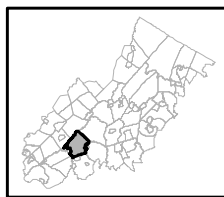
# Exhibit Y: Highlands Roadway Network



## Roadway Network

-  Interstate Highways
-  U.S. Routes
-  State Routes
-  County Routes
-  Local Routes
-  Preservation Area
-  Municipal Boundaries

## Lebanon Township

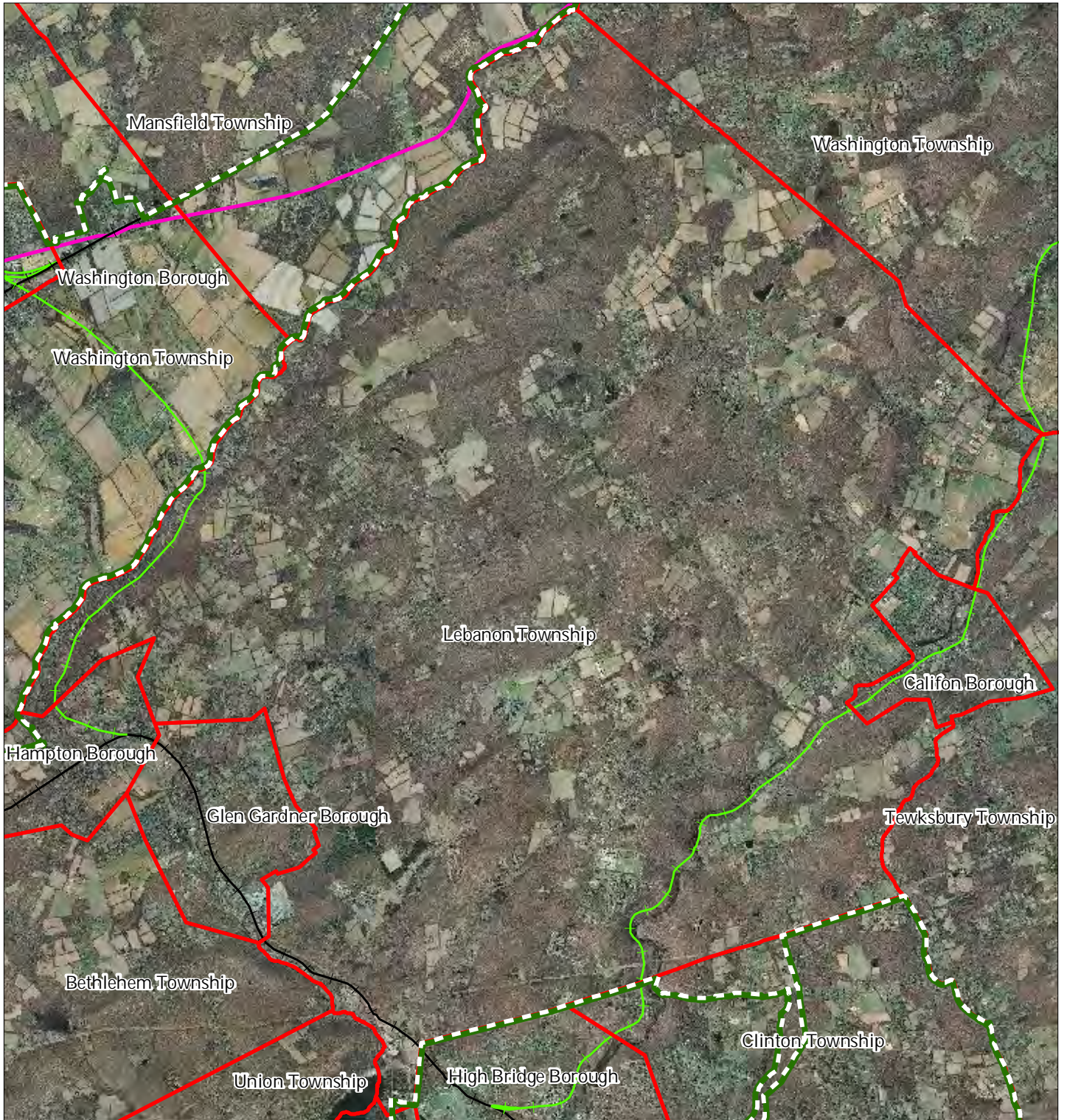


1 inch = 0.968 miles



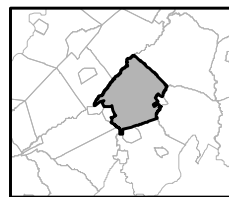
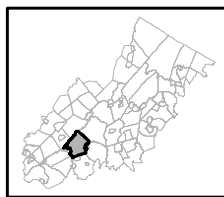
December 2011

# Exhibit Z: Highlands Transit Network



- |   |                      |
|---|----------------------|
| <b>Rail Network</b>                       | Rail Stations        |
| <i>Boonton Line</i>                       | Park and Ride Sites  |
| <i>Main Line &amp; Bergen County Line</i> | Private Bus Lines    |
| <i>Morris and Essex Line</i>              | NJ Transit Bus Lines |
| <i>Raritan Valley Line</i>                | Airports             |
| <b>Freight Rail Lines</b>                 |                      |
| <i>Freight Rail Lines</i>                 |                      |
| <i>Abandoned Freight Rail</i>             |                      |

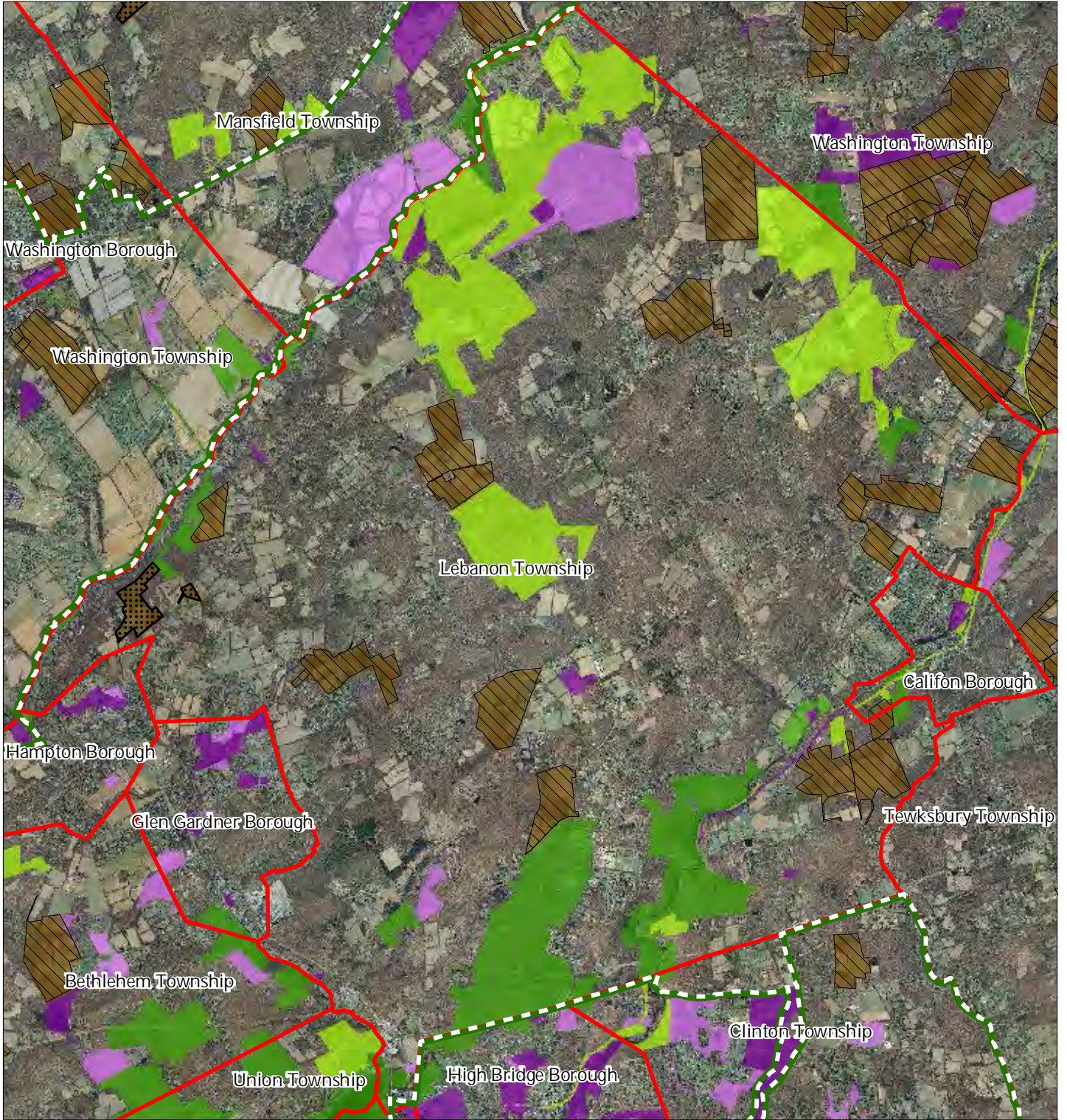
## Lebanon Township



1 inch = 0.968 miles

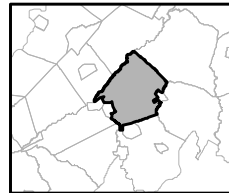
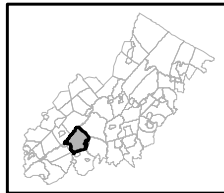


# Exhibit AA: Preserved Lands



- |   |                               |
|---|-------------------------------|
| <b>Preserved Lands</b>                  | <b>Conservation Easements</b> |
| Federal Open Space                      | Green Acres                   |
| State Open Space                        | <b>SADC Easements</b>         |
| County Open Space                       | SADC Final                    |
| Municipal Open Space                    | SADC Preserved                |
| Non-Profit/Private Open Space           | Municipal Boundaries          |
| Water Supply Watershed Lands            | Preservation Area             |
| Preserved Farmland                      |                               |
| Highlands Transfer of Development Lands |                               |

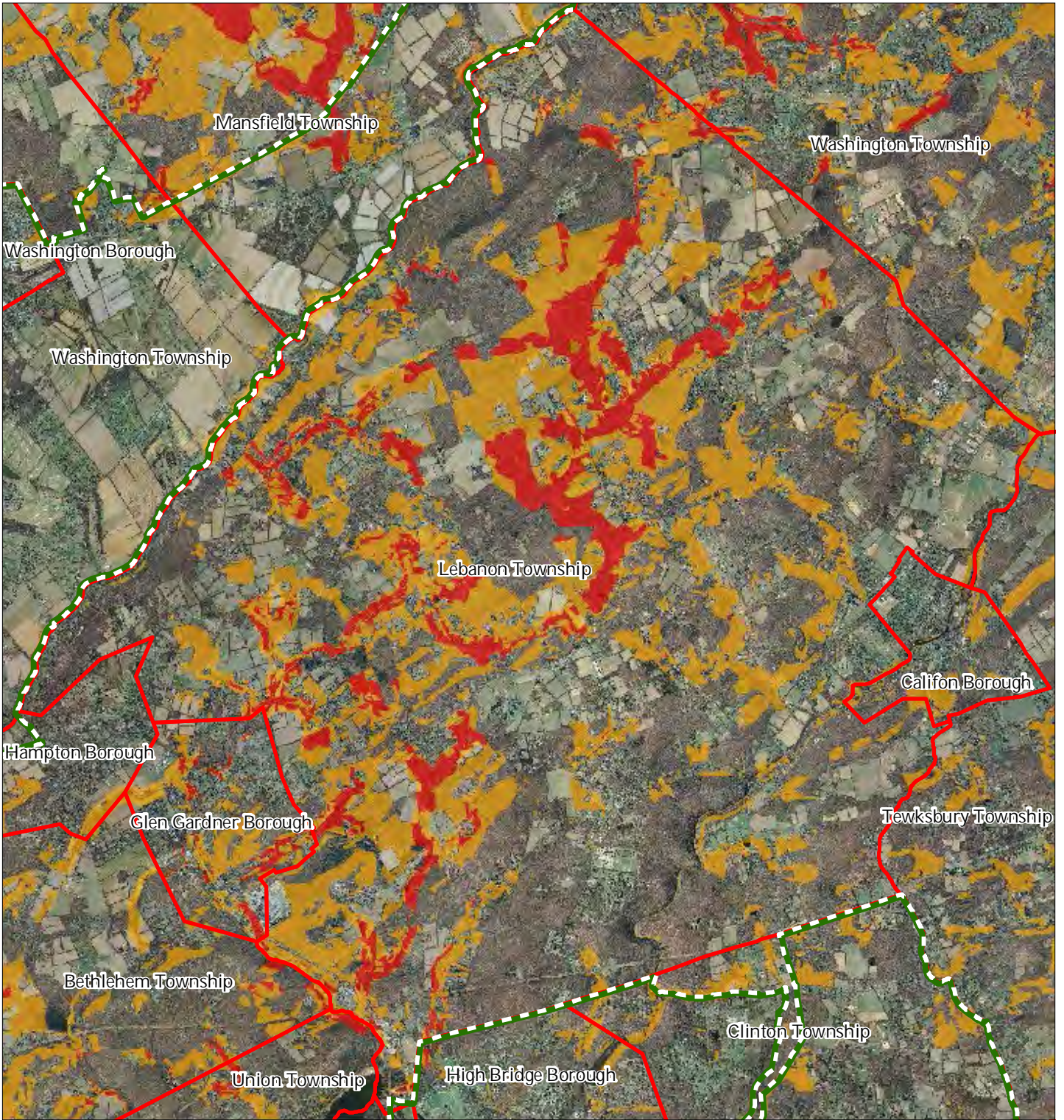
## Lebanon Township



1 inch = 0.968 miles



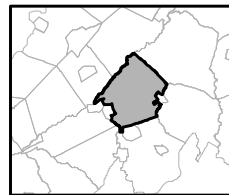
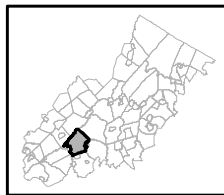
# Exhibit BB: Highlands Conservation Priority Areas



Conservation Priority Area

-  Moderate
-  High
-  Preservation Area
-  Municipal Boundaries

## Lebanon Township

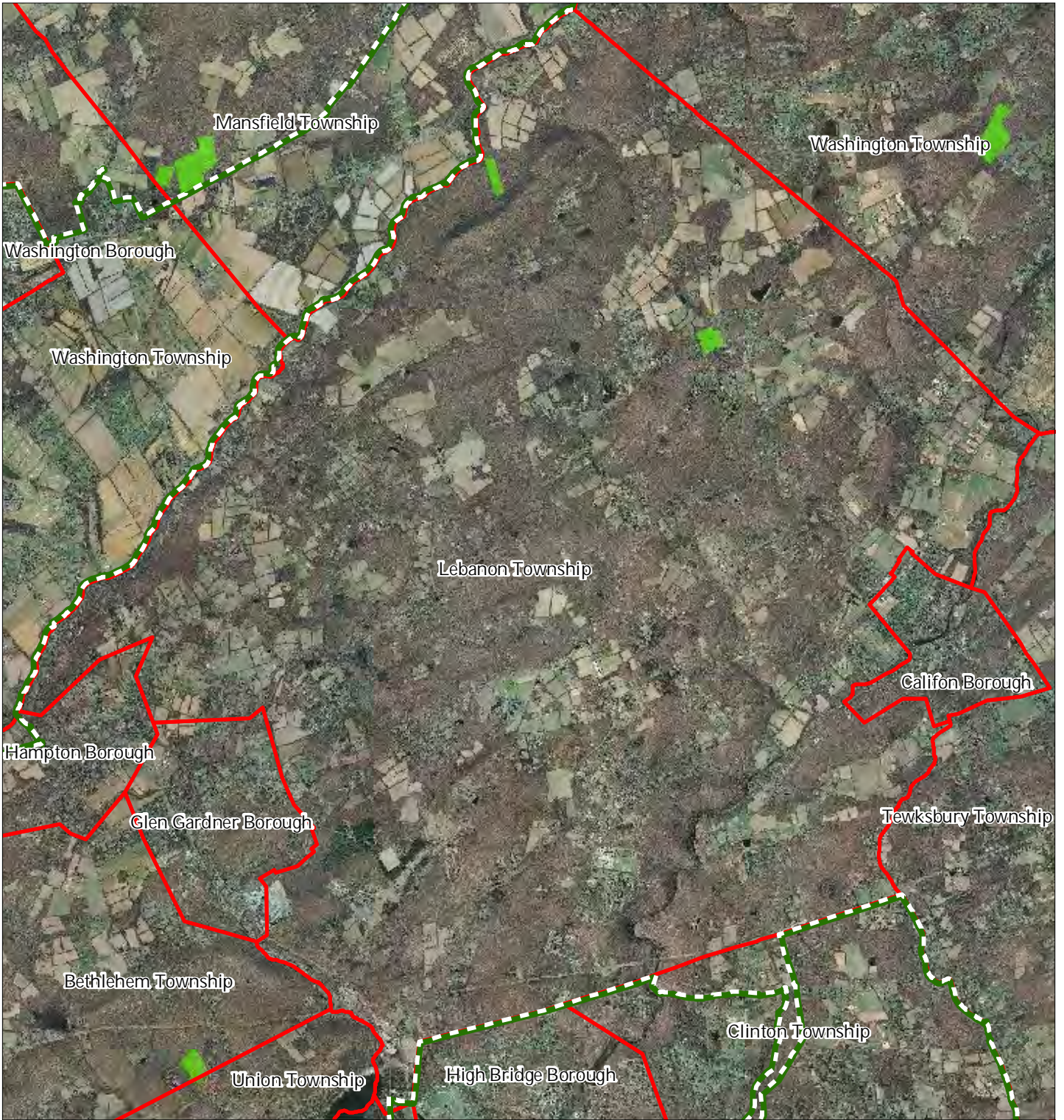





1 inch = 0.968 miles



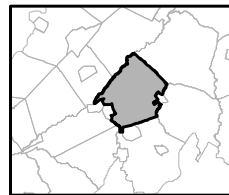
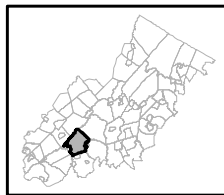


# Exhibit CC: Highlands Special Environmental Zone



-  Special Environmental Zones
-  Preservation Area
-  Municipal Boundaries

## Lebanon Township

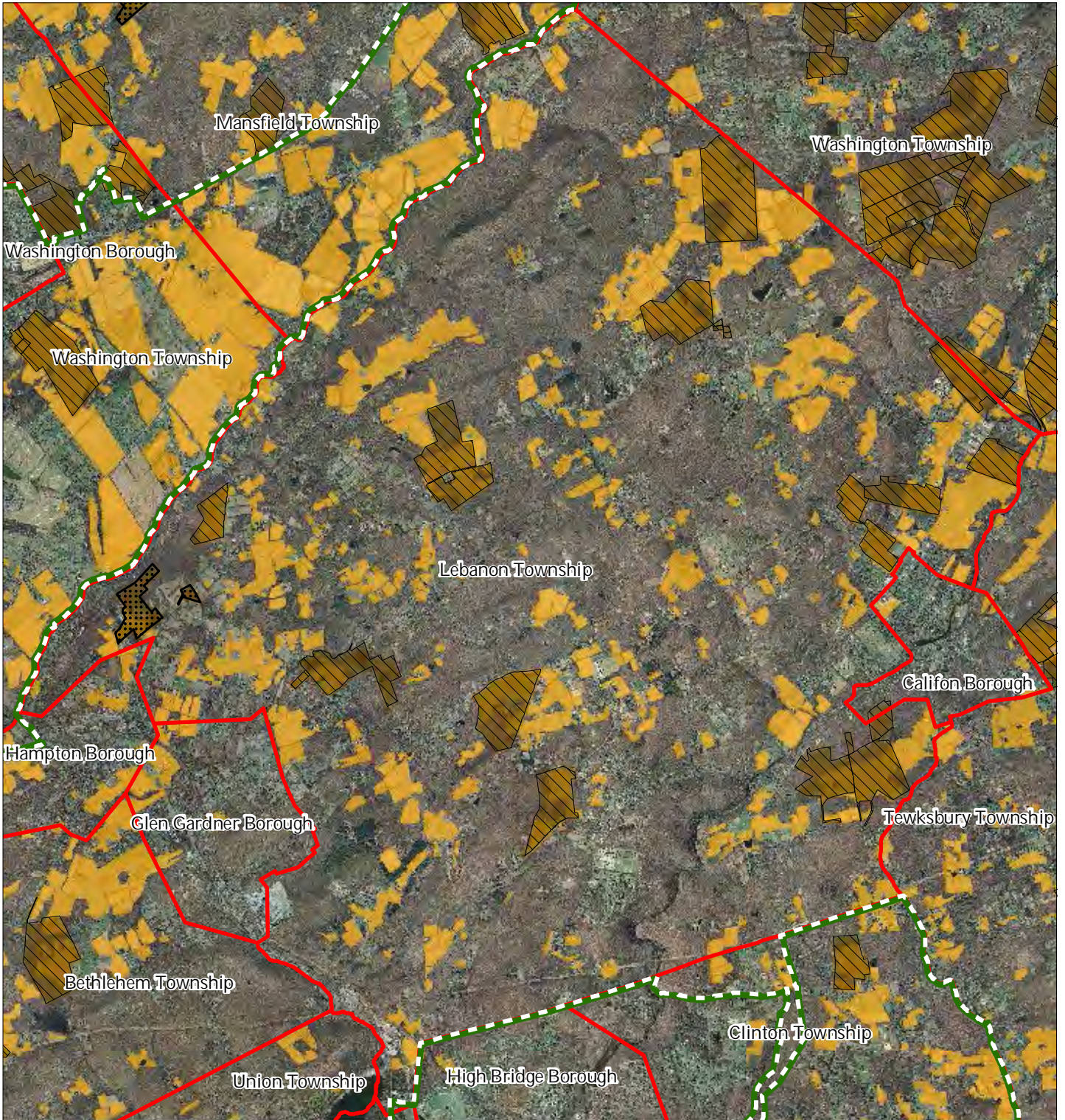


1 inch = 0.968 miles



December 2011

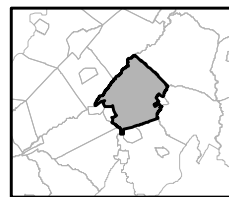
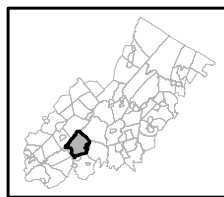
Exhibit DD: Preserved Farms, SADC Easements, All Agricultural Uses



SADC Easements

-  *SADC Final*
-  *SADC Preserved*
-  Preserved Farmland
-  Agriculture Uses
-  Preservation Area
-  Municipal Boundaries

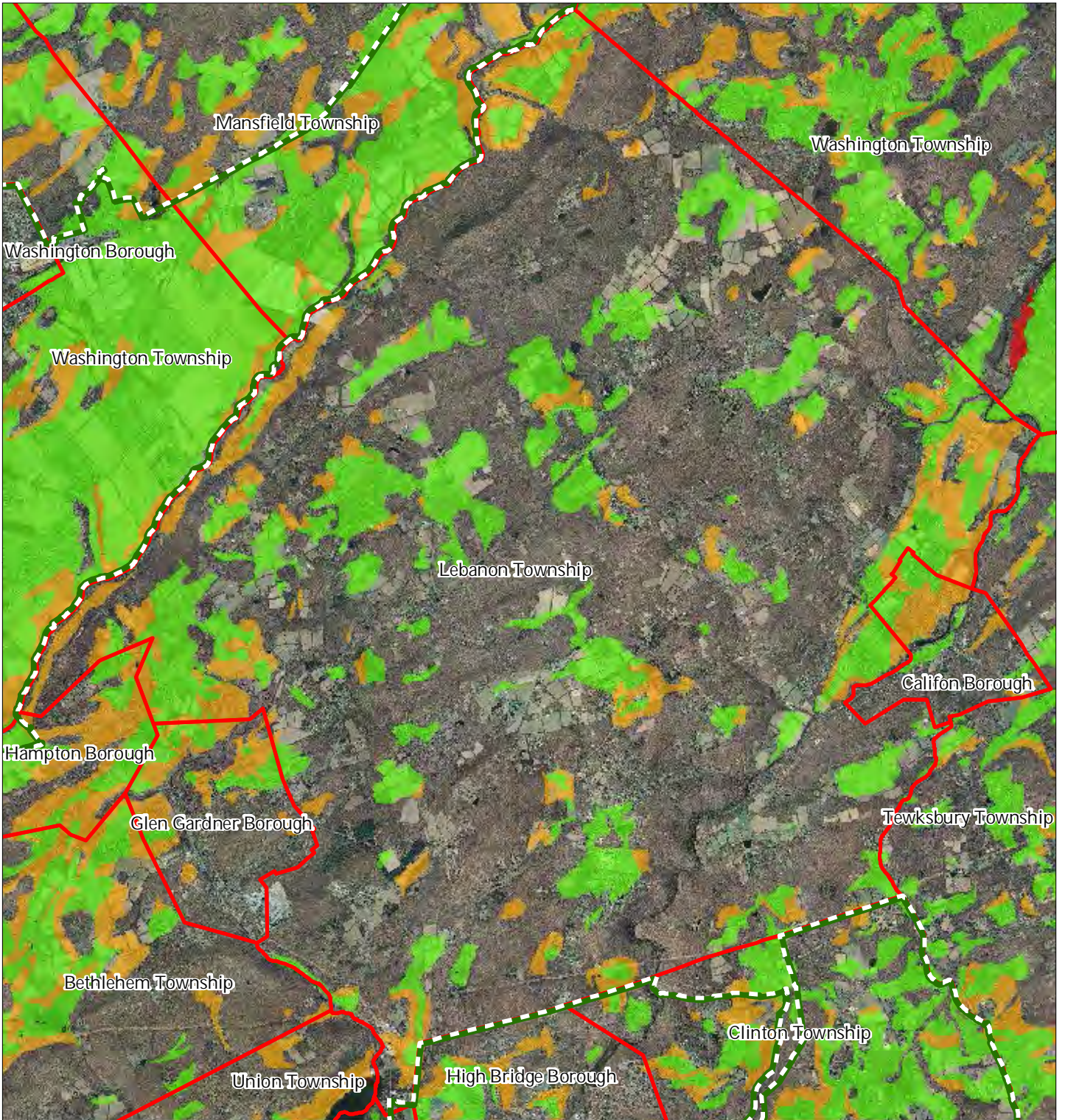
Lebanon Township



1 inch = 0.968 miles



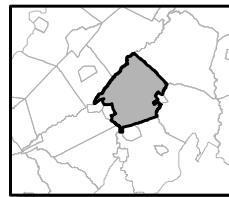
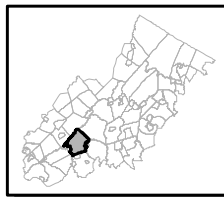
# Exhibit EE: Important Farmland Soils



Important Farmland Soils

-  Prime Farmland
-  Farmland of Local Importance
-  Farmland of Statewide Importance
-  Farmland of Unique Importance
-  Preservation Area
-  Municipal Boundaries

## Lebanon Township

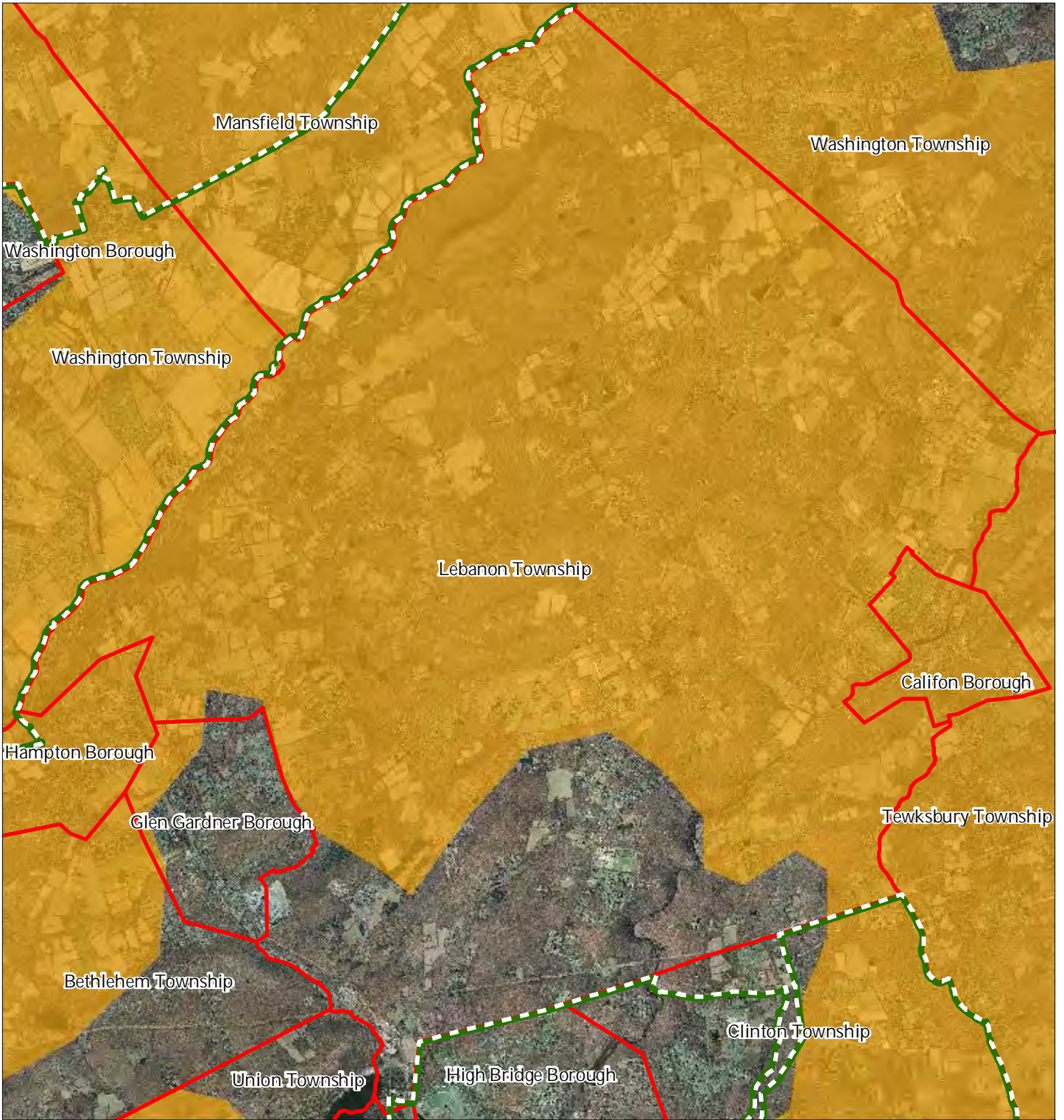





1 inch = 0.968 miles



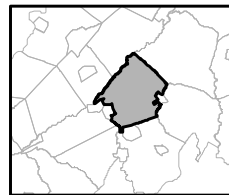
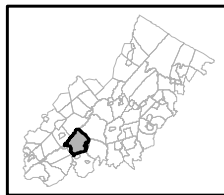
December 2011

# Exhibit FF: Agricultural Resource Area



-  Agricultural Resource Area
-  Preservation Area
-  Municipal Boundaries

## Lebanon Township

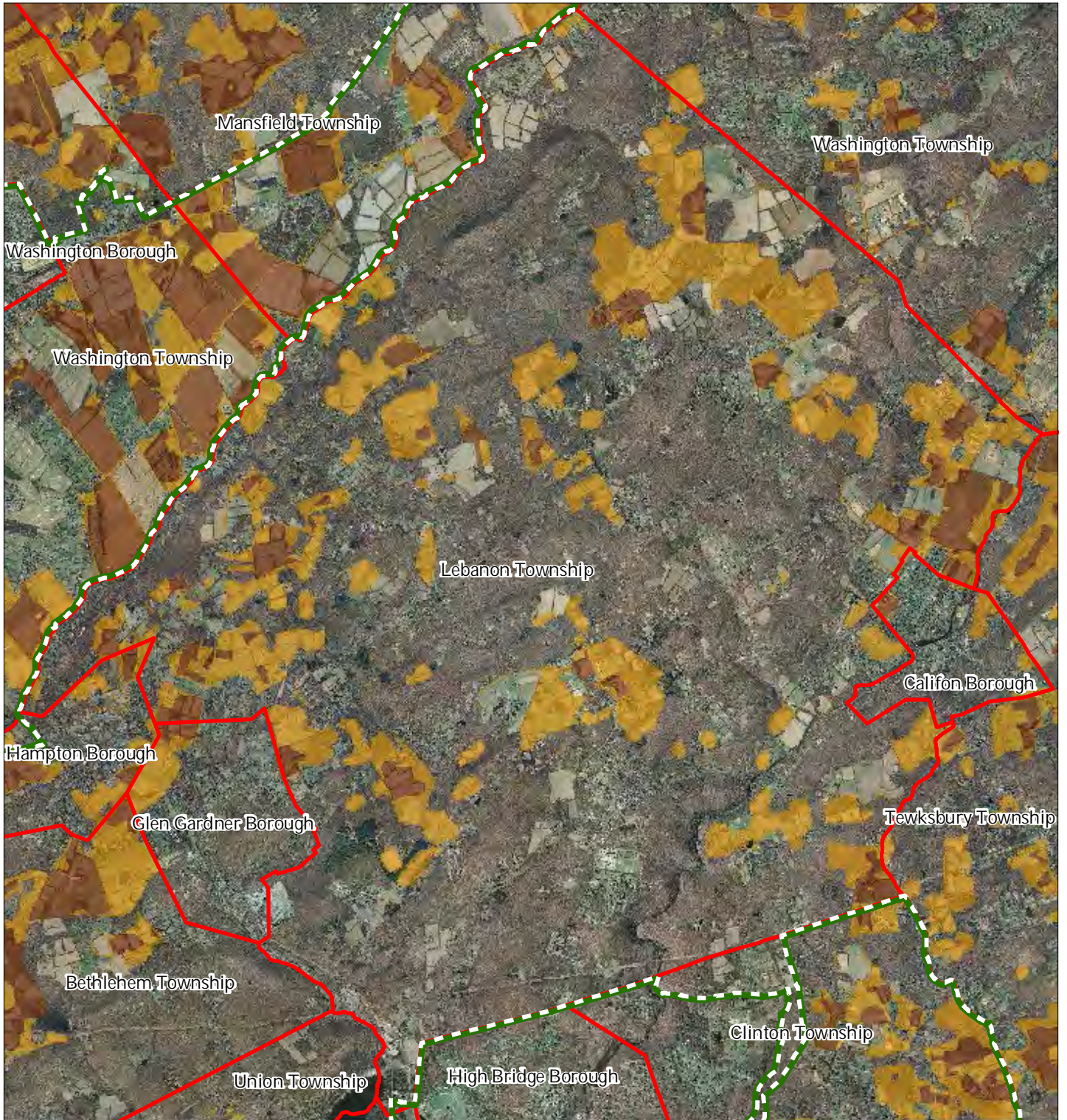


1 inch = 0.968 miles



December 2011

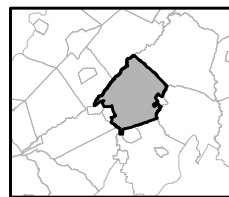
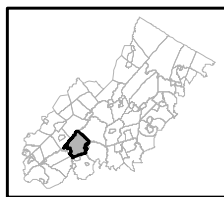
# Exhibit GG: Agricultural Priority Area



### Agricultural Priority Area

-  Moderate
-  High
-  Preservation Area
-  Municipal Boundaries

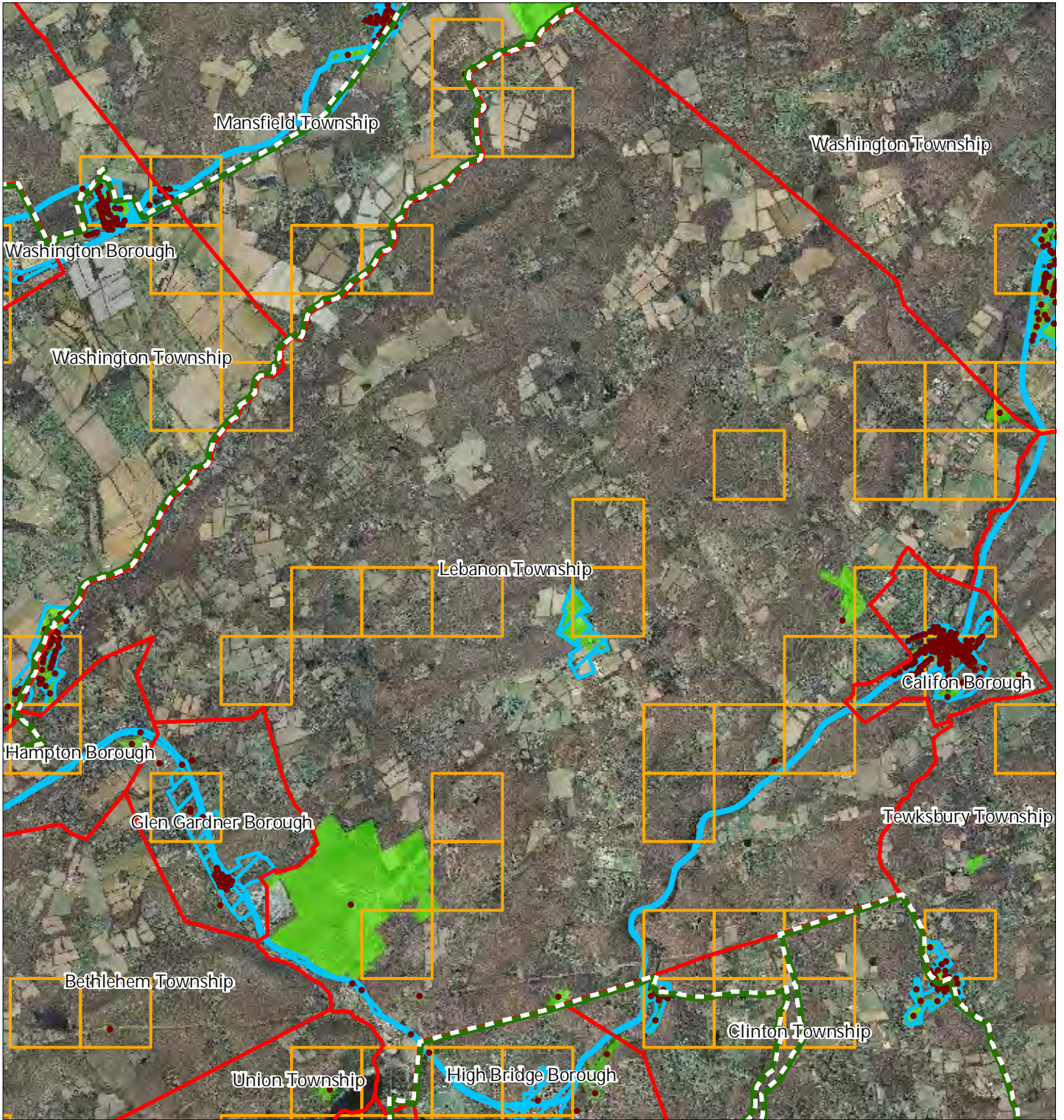
### Lebanon Township



1 inch = 0.968 miles

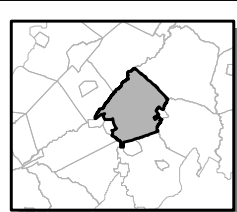
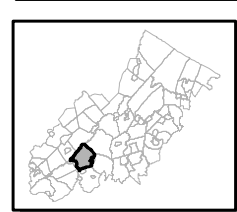


# Exhibit HH: Historic, Cultural, and Archaeological Resources Inventory



-  Preservation Area
-  Municipal Boundaries
-  Archaeological Grids (1 sqmi)
-  NJ Historic Districts
-  Historic Property Points
-  Historic Property Polygons

## Lebanon Township

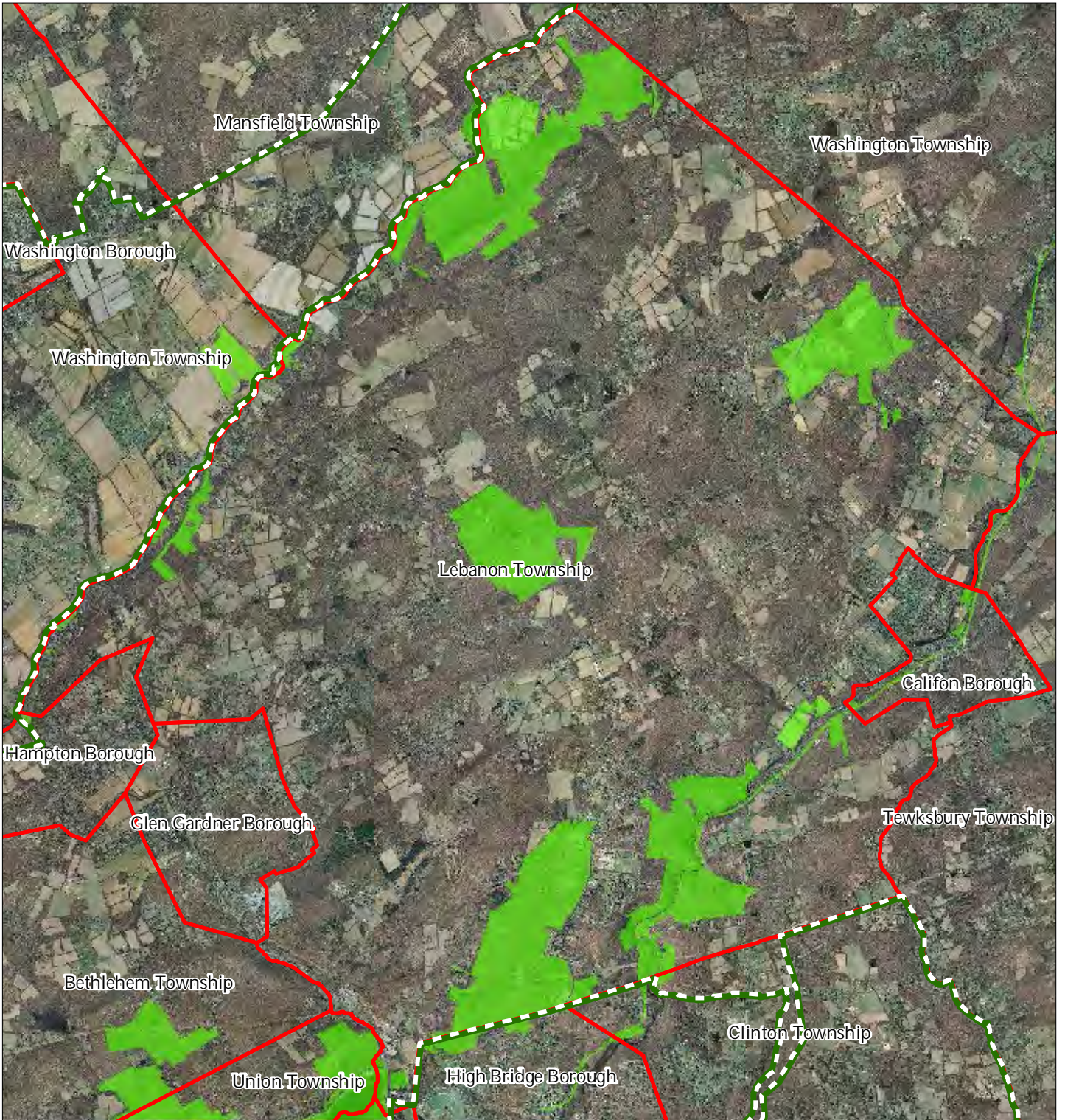


1 inch = 0.968 miles



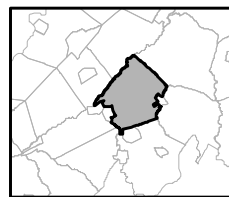
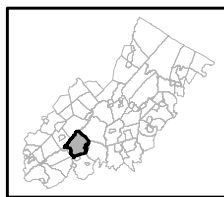
December 2011

# Exhibit II: Baseline Scenic Resources Inventory



- Scenic Resources
- Municipal Boundaries
- Preservation Area

## Lebanon Township

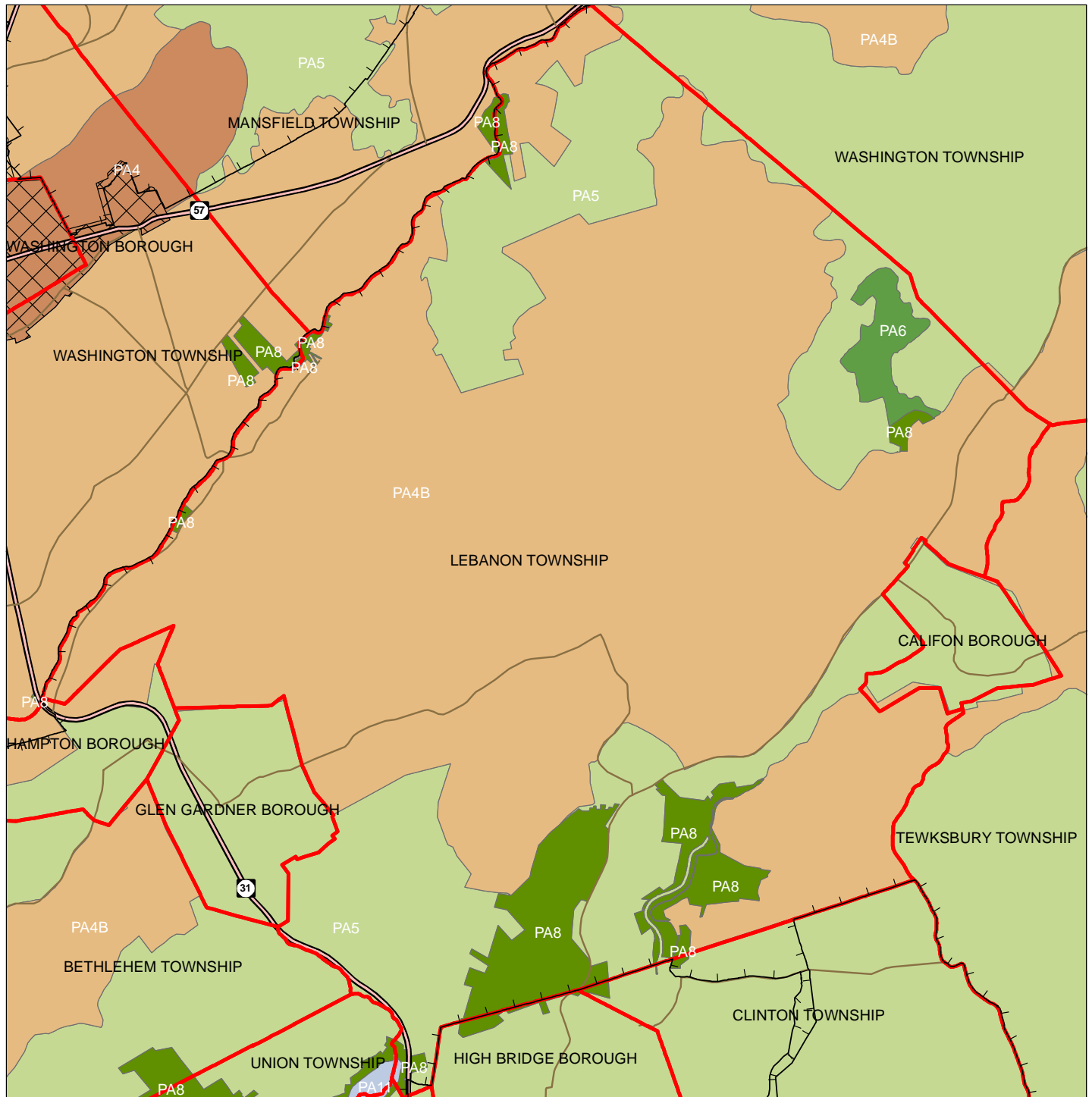


1 inch = 0.968 miles



December 2011

# Exhibit JJ: SDRP Planning Areas



**Legend**

- Preservation Area
- Municipal Boundaries
- Interstate Highways
- U.S. Routes
- State Routes
- County Routes
- Designated Centers\*

**State Planning Areas\***

- METROPOLITAN (PA1)
- SUBURBAN (PA2)
- FRINGE (PA3)
- RURAL (PA4)
- RURAL ENVIRONMENTALLY SENSITIVE (PA4B)
- ENVIRONMENTALLY SENSITIVE (PA5)
- PARK (PA6)
- FEDERAL PARK (PA7)
- STATE PARK (PA8)
- WATER (PA11)
- MILITARY (PA12)

1 inch equals 1.03 miles

\* All designated centers expired on 1/7/2008 except Byram (expires 5/19/2010), Stanhope (expires 10/16/2008), and Sparta and Vernon (expire 7/16/2009). Center designation may be redesignated by the State Planning Commission and the Highlands Council. State Planning Areas are from the State Development and Redevelopment Plan.