

SUMMER

LEBANON TOWNSHIP NEWS

2023

JUNE

JULY

AUGUST



INSIDE THIS EDITION

Education
2

Environmental & Open
Space Commission
4

Recreation Commission
10

Historian Committee
12

Lebanon Township
Museum
13

Bunnvale Library
15

Community News
18

Recycling
22

MUNICIPAL BUILDING
530 West Hill Road
(908)638-8523

HOURS:
Monday – Friday
8:00 AM – 4:30 PM

Lebanon Township
Vol. Fire Dept.

**2ND ANNUAL
FIREFIGHTERS'
FESTIVAL**

RIDES – GAMES
FOOD TRUCKS – BEER GARDEN
SATURDAY NIGHT FIREWORKS
LIVE MUSIC ALL DAY SUNDAY

Lebanon Township Memorial Park, 67 Bunnvale Road
Califon NJ 07830

July 20th-23rd

[GET TICKETS](#)

EDUCATION



The Lebanon Township PTA (LTPTA) serves both Valley View (preK-4) and Woodglen (5-8) Schools. Our mission is to make every child's potential a reality by engaging and empowering families and communities to advocate for all children. By supporting the LTPTA, you are supporting your school, your children, and your community.

The Lebanon Township PTA would like to extend our heartfelt thanks to all of our 2022-2023 school year members and volunteers. It was a busy year! The LTPTA is grateful for the opportunities and events we were able to offer for our students and their families, including beautification, book fairs, Box Tops collection, assemblies, author visits, the "Be Kind" fundraiser, spirit wear and plant sales, family game night, holiday shop, theater program, teacher and staff appreciation, Lebanon Township PTA Scholarship Awards, teacher funding requests, teacher and staff favorites and wishlists, Valley View yearbook, 7th and 8th-grade spring dance, 4th Grade Farewell, 8th Grade Dinner Dance and more!

Mark your calendars for July 1st and get a jump on PTA membership when the new membership year opens! Any local resident, at least 18 years of age or older, with an interest in supporting our schools, whether you have school-aged children or not, is welcome to join the PTA.

Your membership is the strength and foundation of our organization. When you become a member of our PTA you are joining other parents, guardians, teachers, and staff to help our schools provide a quality education and positive learning environment for our children. By becoming a PTA member, you can connect with other parents and guardians, learn about important news and upcoming events, and have a voice in the programs we support.

Dues are \$10 annually and you can register and pay online by accessing the "Join The PTA Now!" link on our website at www.lebtwppta.org. A portion of your membership dues also supports the National PTA and the New Jersey State PTA, which create policies that support the educational needs of children and promote family engagement and strong partnerships between schools and the communities they serve. No one should be excluded from the LTPTA on the basis of finances. If you are unable to join or renew your membership due to financial hardship, please reach out to secretary.membership@lebtwppta.org or president@lebtwppta.org.

Please find more information about our organization, upcoming meetings and events, fundraisers, etc. by accessing our website at www.lebtwppta.org or following us on [Facebook: LTPTA](#).



EDUCATION

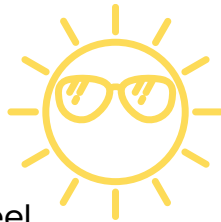
-continued from page 2

The LTPTA holds at least three (3) General Membership meetings throughout the school year. All are invited to attend (only members can vote). Our first meeting of the 2023-2024 school year will be in early fall 2023.

The Participation of parents and guardians is vital to the future of the LTPTA. Please consider volunteering as a PTA Committee Chair or Executive Board Officer for 2023-2024. There are jobs that take no more than a couple hours a month, some that are seasonal, and a few that require a routine commitment. Learn more at www.lebtwppta.org

Box Tops for Education

THANK YOU for supporting our schools 10 cents at a time! Box Tops for Education are a great way to help support the LTPTA with products you are already buying. For more information on Box Tops, including a list of participating products, go to www.BTFE.com. Sign up for a free membership so you can check out our school's earnings and get access to coupons and bonus offers.



Each and every member and dedicated volunteer should feel proud of his/her contribution to our schools and our children. We hope everyone has a safe, fun, and relaxing summer and comes back to school next year refreshed and ready to continue to support our wonderful school and staff!

Thank you for supporting the LTPTA!



71 MACKENZIE RD, HAMPTON NJ 08827

HENRYCORDES28@GMAIL.COM

(908)310-6356

FULLY INSURED

DAILY SKID LOADER SERVICES

- HOME/OFFICE RENOVATION
- BASEMENT, ATTIC, GARAGE & BARN CLEAN-OUTS
- SCRAP METAL REMOVAL
- DEBRIS REMOVAL



LAWN & CLEAN-UP SERVICES



- LAWN MOWING
- YARD CLEAN-UP
- HEDGE ROW CLEAN-UP
- FARM CLEAN-UP

DUMPSTER RENTALS

10 AND 20 YARD DUMPSTERS
AVAILABLE FOR YOUR CLEAN-UPS!

- BOOK YOUR SPRING YARD CLEAN-UP & BED MULCHING NOW!
- SOFTWATER & SURFACE CLEANING OF HOUSE SIDING, POOL AREAS, DECKS, PATIOS & SHEDS
- LIGHT CONTRACTOR DEMO WORK
- FURNITURE & APPLIANCE REMOVAL

ENVIRONMENTAL & OPEN SPACE COMMISSION

Our Forests: To Manage or Not to Manage

The debate about whether to manage our forests sustainably (conservation) or protect them from any human intervention (preservation) has been going on in the United States since the late 1800s with Gifford Pinchot and John Muir. Or so it seems. Although the two men disagreed on things, they shared a common appreciation for the natural world, had mutual respect for each other, and were friends.

That debate is still going on today, however, and although both conservationists and preservationists continue to share a common appreciation for the natural world, it appears as though the respect is gone. It is now about who wins the fight, doing whatever it takes to force people, or the government, to achieve the outcome they want.

The EOSC believes we need to both preserve and manage our forests in Lebanon Township. Our forests maintain the rural character of our township, provide habitat for wildlife, filter our drinking water, shade our trout streams, and convert carbon dioxide into oxygen. Our forests are also a mess and need to be managed. They were unsustainably cut in the 1800s, overabundant deer browse almost every native tree seedling and shrub (and some invasives), trees are dying from pests, invasive non-native plants are taking over the understory, and if left alone our oak forests will become water-guzzling maple, birch, and beech forests. Well, maybe not beech in a few years...

The EOSC has helped Lebanon Township secure a grant to have professionals inventory our municipal-owned forests so we know what's going on with them, and then create a master plan for how to best manage our forests for many of our goals. We will be reaching out to residents and stakeholders once the inventory is completed to discuss what our goals should be.

Be Aware of Mile-a-Minute

There is an invasive vine in Lebanon Township that grows about 6 inches a day – called “Mile-a-Minute”. It can grow 20-30 feet in a summer and smother the plants underneath. It is also called “Asiatic Tearthumb” because the vine has little barbs that will tear up your thumb if you pull it without gloves.

Mile-a-minute was first detected in the US in the 1930s, is widespread throughout NJ, and has been in Hunterdon County since the 1990s. In 2004 a weevil was released as a biocontrol which helps slow its growth and reduce seed production.

This summer, check your property for a vine with triangular leaves and a barbed stem. If you find it, put on gloves and pull it out. If it has already formed a dense mat of vines, consider applying 3% glyphosate directly on the leaves in the summer before they turn color (preferably in June before their fruit ripens). *When applying herbicides, always follow the instructions on the manufacturer's label and avoid applying herbicide if rain is forecast within the next 6-8 hours.*

ENVIRONMENTAL & OPEN SPACE COMMISSION

Learn to Love Bats

Summer evenings at dusk are perfect for watching bats fly around – they look like birds that can't fly straight.



*Northern long-eared bat
photo: Sharon Petzinger*

Bats are flying mammals that don't see well at night and rely on echolocation to navigate. They spend summer nights feeding on insects – one bat can eat more than 3,000 insects in one night! During the warmer months, most bats live inside tree cavities, beneath loose bark, or tucked behind shutters or in attics. Female bats will gather in colonies in these areas to give birth and raise their pups.

New Jersey is home to nine different bat species, but most bats we see now are big brown bats. White-nose syndrome, a disease caused by a fungus, affects cave-dwelling bats while they hibernate and causes them to burn through their fat stores before the hibernation period is over. This disease has killed millions of bats in North America and there is still no cure, but big brown bats have survived because they're one of the few bats species that don't hibernate in caves. The northern long-eared bat, which was once a common bat throughout New Jersey, is the most recent species to become listed as endangered under the federal Endangered Species Act – 97% of their population has been lost because of white-nose syndrome.

What can you do to help bats?

- Try to avoid cutting trees with cavities or loose bark in the spring and summer (May, June, & July) when females are raising their pups.
- If you have bats in your attic, install an exclusion device to safely exclude the bats between August and April, then patch up the holes when they're all out. (Search [NJ Fish & Wildlife, bats in buildings](#) for more information.)
- Consider putting up a bat box on your property, keeping in mind there will be bat droppings on the ground below it.
- If you know you have bats roosting on your property, consider participating in a summer bat count. (Go to [conservewildlifenj.org and search bat-count](#) for more information.)



**In-Home Dog Training, Daily
Walks, Pet Sitting, Large & Small
Animal Care**

(908)-975-5711

TheLeadPetCare@gmail.com

..... *Now Hiring!*

**FULL & PART TIME POSITION AVAILABLE
FLEXIBLE HOURS**

[Learn More](#)

CKW Wealth Management

Financial Guidance • Financial Confidence

Robert D. Lamperti
Accredited Investment Fiduciary



OUR SERVICES

- Financial Planning
- Retirement Planning
- Estate Planning
- Investment Planning



(908) 879-4332
www.ckwealthmanagement.com

[Learn More](#)

ENVIRONMENTAL & OPEN SPACE COMMISSION



Beech leaf disease Photo: NJ Forest Service

First the Ash Trees Die, Now the Beech

Just when you think you're safe after taking care of all your dying ash trees, the next tree killer has arrived. This time, it's a microscopic worm that will kill your beech trees.

Beech leaf disease was first detected in Lebanon Township last summer. An infested tree will die within about six years; smaller trees will die faster than larger trees. Not much is known about this disease or how it spreads, and there is no cure or treatment, but experimental research is underway to find a treatment.

Beech trees are the only trees around here that have very smooth, thin gray bark – the one most people carve their initials in. If you have a beech tree on your property, check the leaves this summer for signs of beech leaf disease. Initial visible symptoms are dark bands between leaf veins which are best seen when holding a leaf up to a light source. At first, symptoms may only be present on a few leaves within a single branch. As the disease progresses more leaves will become affected and additional symptoms, including browning leaf edges that begin to curl, leathery leaf texture, and early defoliation, may become apparent. Go to nj.gov and [search parks and forests](#) for more information.

Another Lebanon Township Litter Clean Up is "In the bag"

The annual litter clean up is about taking care of our community. We have been so fortunate in the people who've joined us to help keep Lebanon Township a beautiful place to live.

Over the years, the program has involved hundreds of volunteers who have cleaned thousands of pounds of litter from our roads, streams, rivers and parks. Many thanks to these generous community members.



Fall Bow Hunting In Lebanon Township

Attention Deer Hunters! Did you know you can bow hunt some of Lebanon Township's open space property?

A permit lottery will be held in mid-August for Fall Bow. Visit the Township Website: lebanontownship.net for more information.

Bridget Woodell
REAL ESTATE



COLDWELL BANKER | REALTY

As a Realtor with Coldwell Banker I am grateful to be part of the
kindness I experience in our neighborhoods.

"Maybe that's the best part of going away for a vacation~coming home again.."
MADELEINE L'ENGLE

#1 Agent for Lebanon Township 2022
Information provided by GSMLS



Bridget Woodell



C: 908-461-0250

bridget.woodell@cbmoves.com



COLDWELL BANKER | REALTY



Bridget Woodell, Real Estate



@Bridgetwoodellrealestate

Visit my new website



When you can't find the Sunshine
Be the Sunshine!

- Top Agent
- International Presidents Circle
- Circle of Excellence 2016-2022
- Licensed Broker | Sales Person
- Over 13 Years Experience

Your Home. Your Future. My Commitment.

First time home buyer


TIP

The NJHMFA Down Payment Assistance Program (DPA) provides up to \$15,000 for qualified first-time homebuyers to use as down payment and closing cost assistance when purchasing a home in New Jersey.



**Follow me for more
real estate tips!**

 Bridget Woodell, Real Estate

 @Bridgetwoodellrealestate

Bridget Woodell
REAL ESTATE



COLDWELL BANKER | REALTY

Summer Newsletter

[Learn More](#)



LEBANON TOWNSHIP RECREATION COMMISSION

Fireflies & Full Moon Hike

SATURDAY, JUNE 3RD 8:30 - 9:30PM
MOUNTAIN FARM - 30 PLEASANT GROVE ROAD

As dusk settles, come watch the sparkling lights of fireflies appear as we learn how and why they light up. We will take to the fields with nets to catch some to study up-close. We may also see or hear some other nocturnal insects. As we walk the fields we will also enjoy basking in the light of the full moon. Email Recreation@lebtwp.net to register.

[Learn More](#)

RECREATION COMMISSION



2023 Easter Egg Hunt

On a beautiful Sunday morning in April, Lebanon Township celebrated spring with its annual Easter Egg Hunt & photos with the Easter Bunny.



(908) 832-7510

Preschool Programs

- 2 ½ Years (2 days per week)
- 3 Years (2 & 3 days per week)
- 4 Years (3 & 4 days per week)
- Fab 5's

*Extend the day with Lunch
Bunch and our Enrichment
Programs!*

Enrichment Programs

(No preschool enrollment required)

- Culinary Kids (all ages)
- Yoga (all ages)
- Music & Movement (all ages)
- Hands-on-Science (4 & 5 yrs)

Route 513 in Califon, NJ
happyfacenurseryschool.org
info@happyfacenurseryschool.com

[Learn More](#)

HISTORIAN COMMITTEE

Voorhees State Park Celebrates 90 Years

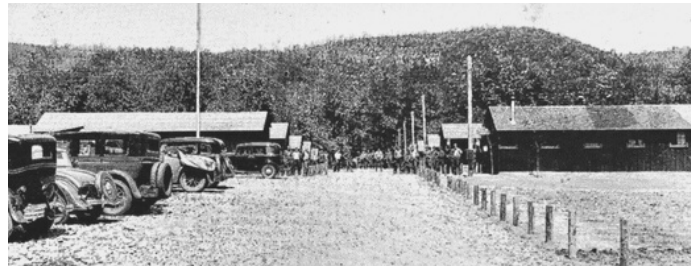
Have you ever wondered how Voorhees State Park became the natural sanctuary it is today? Up until 1927, the land was a working farm with pastures, an orchard, woods, farm buildings, and a home owned by former Governor Foster Voorhees. After his death in 1927, his 325-acre farm was donated to the people of NJ. Subsequent acquisitions increased the park's size to 640 acres of rugged beauty.

During the Great Depression, park expansion took place in many states. This was due to a Federal work program known as the Civilian Conservation Corps. The CCC was established by President Franklin D. Roosevelt under the New Deal to "prime the pump" of the nation's economy.

In the fall of 1933, enrollees of the CCC began arriving and construction of Camp Voorhees began. Most were young men between the ages of 18 and 25.



Nicknamed "Roosevelt's Tree Army," the work of the CCC initially focused on reforestation, but quickly evolved to include soil conservation and development of recreational park facilities. The CCC advanced natural resource conservation in this country by decades, and provided education, training, and experience for a generation of young men.



Looking north on Company Street, barracks can be seen on both sides of the road in 1934.



The same view today.

By the time the CCC boys were finished working in 1941, they had built the present-day park and amenities. Generations later, the importance of the CCC to New Jersey State Parks is still evident. Voorhees State Park is enjoyed by thousands each year, and it came to life thanks to the CCC. During your next visit, take a drive along the Park Road, hike the trails along Willoughby Brook or through Hill Acres, and remember the young men who left a legacy in parks and forests here in our Township and across the country.

MACKENZIE

ELECTRIC

ELECTRICAL CONTRACTOR
RESIDENTIAL - COMMERCIAL
INDUSTRIAL

Lic# 13857

John J. MacKenzie

(908) 638-8534

LEBANON TOWNSHIP MUSEUM



Wild Musconetcong, our exhibit celebrating the river's long and dynamic history, ends its mighty run on Thursday, June 22nd. The past two months have been filled with events for all ages including a fly-tying demonstration, lectures, book signings, and children's story times.

Call the museum at (908)638-8523 extension 405 or follow Friends of the Lebanon Township Museum on [Facebook](#) to stay updated on the last few Wild Musconetcong happenings.

Historic New Hampton, our next exhibit, commemorates the 25th anniversary of the village of New Hampton's inclusion on the National Register of Historic Places. This designation was given due to New Hampton's significance in architecture, commerce, education, transportation and community development from 1780 through 1929. The historic district includes forty-two contributing buildings (including the museum), six contributing sites and four contributing structures.

The most significant of the structures may be the New Hampton Pony Pratt Truss Bridge which itself had been added to the National Register of Historic Places on July 26, 1977 and was also documented by the Historic American Engineering Record in 1991.

Children who attended the New Hampton school (now the museum) frequently crossed the bridge to get fresh spring water or to have picnics in the meadow. Additionally, Carlisle Indian School students here on "Outing" would have had to cross the bridge to attend school.



New Hampton Bridge Photo: National Archive 1991

Historic New Hampton celebrates not only the history of the hamlet but also the effort of neighbors to realize this goal. **The exhibit, which opens July 1st, will share work by past and current New Hampton artisans.** Call the museum at (908)638-8523 extension 405 or follow Friends of the Lebanon Township Museum on [Facebook](#) for information on upcoming Historic New Hampton events including a walking tour on Saturday, September 16th.



421 Route 513
Califon, New Jersey 07830

Phone: (908) 832-7523
Fax: (908) 832-9473

Mary Beth Hamorski, VMD
Jeff Salatiello, VMD

www.califonanimalhospital.com

[Learn More](#)

Friends of Memorial Park

SAVE THE DATE

FALL FEST

SATURDAY, 9/23/23

1-6PM

MEMORIAL PARK,
LEBANON TWP

LIVE MUSIC, GREAT FOOD,
& LOTS OF ACTIVITIES!

[Learn More](#)

BUNNVALE LIBRARY



Library Hours:

Wednesday: 1-8pm
Thursday: 9am-5pm
Friday: 9am-5pm
Saturday: 9am-2pm

Telephone:

(908)638-8523 x401

The Bunnvale Library has added many new children's & young adult books to our inventory.

If you want to read books, use computers, and the ability to travel through space and time – **sign up for a library card.**

The Anne Rambo Curio Cabinet has been a staple at the library since the late 1980s. Patrons have been displaying their crafts, collectibles, talents, and hobbies for over 30 years. If anyone has anything they would like to display in the cabinet—please call or stop by the library. The display changes monthly. There are months available for 2024.

June will be a Collection of Birds by Nina Savioa. July will showcase Santas in July by Veronica Codoyannis. Linda Mahoney in August has Everything Dutch to display.

The Book Club meets on the 4th Wednesday of each month at Bunnvale Library at 7 pm. For June, the book club will discuss The Thirteenth Tale by Diane Setterfeld. The Personal Librarian by Marie Bennett is scheduled for July's meeting. August will feature The Dutch House by Ann Patchett.

"IF YOU ONLY READ THE BOOKS THAT EVERYONE ELSE IS READING, YOU CAN ONLY THINK WHAT EVERYONE ELSE IS THINKING." –Haruki Murakami

Bunnvale Library is now accepting book donations, especially children's books, movies, and audiobooks that are gently used—NO MOLDY OR WATER DAMAGED BOOKS. **Donations of current fiction and non-fiction books would be a welcomed addition to our inventory.**



Please DO NOT put donations in the book drop or leave them outside when we are not open. The Library does NOT accept textbooks, outdated medical and computer/business books (nothing older than 2020), encyclopedias, or magazines! Please call first before donating any of the above items.

Dog's License renewals are now overdue!

Renewal fees are \$37 for an altered dog and \$40 for unaltered. Please make sure the Rabies shots are current and good through the first 10 months of the licensing year. For questions, call Kim at 908-638-8523 X102 or email: deputyclerk@lebtwp.net.

Lebanon Township's **FREE RABIES CLINIC** is scheduled for **November 4, 2023 from 9 am to noon** at the Department of Public Works Building on the corner of Anthony & Newport Roads.



Minglewood Kennels
Providing Quality Pet Care Since 1994

Boarding ♦ Grooming ♦ Training

(908) 832-2104

www.minglewoodkennels.com

[Learn More](#)



SHARON GROBEN REAL ESTATE IS CELEBRATING 18 YEARS!

Realtor®/Sales Associate, Lebanon Township Resident

SELLING LEBANON TOWNSHIP IS WHAT I DO

Thinking of Buying or Selling? Call Sharon!

C: 908-303-9385 ~ GoGroben@earthlink.net ~ O: 908-735-8140

Visit SharonGroben.com to view all the listings on the Garden State MLS

PUT SHARON'S EXPERIENCE TO WORK FOR YOU!

WHAT MY CLIENTS ARE SAYING

Sharon did an excellent job selling our house from the very beginning right through to the end. Her marketing process was great, the house photos were fantastic and we had offers in the first few days after we listed! Sharon was a calming and steady influence throughout the tedious, sometimes nerve wracking process of selling a house. She was always available for questions and prompt in getting back to us. She was fun to work with and very professional. She exudes a high level of confidence in her abilities and she delivers. I would work with her again and recommend her to anyone buying or selling their house. *John & Tanina Kranyak*

DON'T WAIT!
RIGHT NOW IS THE TIME TO SELL!
CALL SHARON AT 908-303-9385
FOR A FREE, CONFIDENTIAL MARKET ANALYSIS.



*Lebanon Township data source: RE Datum. Information deemed reliable, but not guaranteed. Does not reflect all market activity.
Data accurate as of 5/1/2023. If your home is currently listed with another broker, this is not intended as a solicitation of that listing.

Weichert
REALTORS®

[Learn More](#)

SHARON GROBEN THE LEBANON TOWNSHIP EXPERT WITH OVER 110 CLOSED SALES

A Lebanon Township Showcase of Homes



UNDER CONTRACT



471 W Hill Road
List Price \$499,900

JUST SOLD



7 Doefield Road
Sold Price \$1,026,000

JUST SOLD



23 Woodland Heights Circle
Sold Price \$800,000

SOLD 2023



175 Mount Grove Road
Sold Price \$520,000

SOLD 2022



435 Little Brook Road
Sold Price - \$799,900

SOLD 2022



15 Country Woods Drive
Sold Price - \$699,900

SOLD 2022



744 Backhus Estate Road
Sold Price - \$735,000

SOLD 2022



182 Musconetcong River Road
Sold Price - \$630,000

SOLD 2022



34 Sharrer Road
Sold Price - \$560,000

SOLD 2022



4 Summit Drive
Sold Price - \$450,000

SOLD 2022



89 Mount Kipp Road
Sold Price - \$422,000

Your Property
Could Be Next!
Call or Text me today
at

908-303-9385

**WITH LOW, LOW INVENTORY NOW IS THE TIME TO SELL!
WANT TO KNOW WHAT YOUR HOUSE IS WORTH?
CALL SHARON AT 908-303-9385 FOR A FREE CONFIDENTIAL MARKET ANALYSIS.**



This representation is based in whole or in part on data supplied by the Garden State Multiple Listing Service, LLC ("GSMLS"). GSMLS does not guarantee nor is in any way responsible for its accuracy. Data accurate as of 5/1/2023. Data maintained by GSMLS may not reflect all real estate activity in the market. If your home is currently listed with another broker, this is not intended as a solicitation of that listing.

Weichert
REALTORS®

[Learn More](#)

COMMUNITY NEWS

Upcoming Events at Spruce Run Lutheran Church (442 West Hill Road)



Greetings neighbors. We would like to invite you to some upcoming events.

Firstly, we would like to invite you to join us on the **first Wednesday of the month at 7 pm at Gronsky's Milk House** (125 West Main Street in High Bridge, we meet on the benches by the river) for **PubLiCK Theology**. Our June subject will be *Creations*. Our July subject will be: *What is the Wisdom Project?* Our August subject will be *The Book of Romans*.

Secondly, starting on **June 8th, we will be gathering at 7 pm in our freshly repainted Carriage House** (located next to our lower parking lot) to read and discuss the Didache. The Didache is a catechism likely written by the same community that wrote the Gospel of Matthew; this document was lost for centuries and rediscovered in the 1870s. It gives us a look into the life and practices of the earliest church.

Thirdly, All are welcome at our next **Game Night**. It's a fun intergenerational night of board games and pizza. **Keep an eye on our [social media](#) for June, July and August dates.**

Finally, our **summer worship time shifts to 9am starting on June 4th.**

Peace,
Pastor Chris Halverson



BRYAN ABESSI, M.D.

COMPREHENSIVE, CATARACT, CORNEA

3322 ROUTE 22 WEST, SUITE 503
BRANCHBURG, NJ 08876

T: 908-952-0444
F: 908-952-0333

WWW.ABESSIEYE.COM
EMAIL: INFO@ABESSIEYE.COM

[Learn More](#)



Attn: Lebanon Township Seniors

The **Clinton Township Senior Group** now meets at the Lebanon Township Fire Company building on Hill Road. We meet on the second Wednesday of each month at 10 am. Dues are \$15.00 per year.

All are welcome to come and visit us at a meeting to see if you would be interested in joining. We hope to see you soon.

Call President Sandy Pill (908-581-8352) if you have any questions.

COMMUNITY NEWS

The North Hunterdon Food Pantry, located at 24 Skinner Rd, Glen Gardner, will be distributing food on the below dates for families needing to supplement their food needs.

June 8 – 9:00–12:00

July 13 – 9:00 – 12:00

August 10 – 9:00 – 12:00

Follow us on Facebook: NORTH HUNTERDON FOOD PANTRY to get up-to-date information on possible volunteer opportunities and how local groups can help.

Contact us by phone (909) 537-4824 x2 email: nhcfoodpantry@gmail.com
online: www.sprucerunlutheran.com



Kienlen Lattmann Sotheby's
INTERNATIONAL REALTY

Looking for more
room to grow?
Let's Talk! I can
help you with all
your home buying
and selling needs!



Annette Lemenze

SALES ASSOCIATE

908.892.0816 | alemenze@klsir.com | annettelemenze.klsir.com

Kienlen Lattmann Sotheby's International Realty

Strategic office locations in Basking Ridge, Bedminster, Madison, Mendham, and Morristown
908.696.8600

©Sotheby's International Realty. All Rights Reserved. The Sotheby's International Realty trademark is licensed and used with permission. Each Sotheby's International Realty office is independently owned and operated, except those operated by Sotheby's International Realty, Inc. The Sotheby's International Realty network fully supports the principles of the Fair Housing Act and the Equal Opportunity Act. All offerings are subject to errors, omissions, changes including price or withdrawal without notice.

[Learn More](#)

COMMUNITY NEWS

Let There Be Light! The windows of the **Mt Lebanon Church** have been covered with wood panels for more than half a century. Soon, however, sunlight will shine into the old stone church once again. The handmade wood-framed windows hidden between layers of insulation and plywood are being systematically removed and restored as part of the ongoing restoration of the entire building by The Squiers Point Historians of Lebanon Township. Follow us on [FACEBOOK](#) to learn more about the project.



Free Town-Wide Paper Shredding Event for Township Residents (PLEASE NO BUSINESSES)

Date: **September 23, 2023**

Time: **8:00 a.m. to 11:00 a.m.**

At the Municipal Building front parking
lot 530 West Hill Road

Papers should be loose and dry
NO rubber bands, binders, metal
fasteners, hanging folders, metal
book rings, or binder clips.

Staples, paper clips, and manila file
folders are acceptable.

Shredding will be done on-site by
Absolute Shredding of Phillipsburg, NJ.
Any questions, call JoAnn on Friday(s)
at 908-638-6964 ext. 106



Califon Dental Arts

DR RUSSELL O'CONNELL D.M.D.
GENERAL DENTISTRY

3 SLIKER ROAD
CALIFON, NJ 07830

908-832-2300
FAX: 908-832-6286



GROENDYKE ASSOCIATES

AN INDEPENDENT INSURANCE AGENCY

Phone: (908) 638-8558

Toll-free: (800) 476-7466

Fax: (908) 638-8233

Email: customerservice@groendyke.net

www.groendyke.net



SELECTIVE®

Response is everything.

- AUTOMOBILE INSURANCE
- HOMEOWNERS INSURANCE
- FLOOD INSURANCE
- BUSINESS INSURANCE
- CONTRACTORS INSURANCE
- LIFE & HEALTH INSURANCE

Headquarters: 295 County Road 513 • Califon, NJ 07830

[Learn More](#)

RECYCLING

Lebanon Township will no longer be holding the monthly Recycling Depot in the parking lot behind the Municipal Building. Instead, a recycling dumpster has been placed in the rear parking lot of the Municipal Building closest to the former Rescue Squad building and is available for residents to drop off their recyclable materials at any time. The dumpster will be emptied on a weekly basis.

Please understand that it is **extremely important** that materials placed in the dumpster, are actually recyclable. The service provider scrutinizes the contents of the dumpster; if there are too many non-recyclable materials, none of the material will be recycled and will instead be sent to a landfill.

Please refer to the information below to determine whether or not something can be placed in the recycling dumpster. Detailed information is also available at recyclingsimplified.com/recycling-basics.

DO Recycle these Items:

- Glass bottles or jars with lids attached
- Plastic bottles or jugs with lids attached
- Metal cans
- Flattened cardboard
- Non-mixed paper – remove bubble wrap from padded envelopes and plastic windows from paper envelopes

DON'T Recycle these Items:

- Plastic bags of any kind
- Items which are wet
- Items which contain food or food residue, including pizza boxes with grease residue
- Bubble wrap or styrofoam
- Unattached lids – they are too small – attach them to the bottle or jug they came from



The Hunterdon County Residential Recycling Program is held at the Hunterdon County Transfer Station/Recycling Depot, 10 Petticoat Lane, Annandale. The Transfer Station is open Mon – Fri 7:00 AM to 4:30 PM & Sat, 7:00 AM to 12:45 PM.

ITEMS ACCEPTED FOR RECYCLING AT THE TRANSFER STATION:

Aluminum cans: Only empty beverage cans will be accepted. Other aluminum items WILL NOT BE ACCEPTED.

Cardboard, chipboard & brown paper bags:

Corrugated, chipboard (boxboard) and brown paper bags will be accepted. Cardboard should be tied or placed in another cardboard container (box). Cardboard with food or food residue WILL NOT BE ACCEPTED.

Glass bottles and jars: Food and beverage container glass with rings and caps removed will be accepted. All containers MUST be emptied and rinsed. Cups, drinking glasses, dishes, ovenware, window glass, lead crystal, TV tubes, light bulbs, mirrors or any other type of glass product WILL NOT BE ACCEPTED.

Hard covered books & Paperback books

Junk mail & office paper: Un-shredded junk mail and office paper will be accepted. Junk mail and office paper should be tied or placed in a cardboard container (box). Shredded or bagged junk mail and office paper WILL NOT BE ACCEPTED.

Newspaper: Newspaper tied with string or twine will be accepted. Newspaper bound in tape or other materials WILL NOT BE ACCEPTED.

Plastics bottles # 1-7: Plastic bottles # 1-7 that originally contained liquids are accepted. All containers MUST be emptied and rinsed.

Telephone books

Tin and bi-metal cans: Are accepted if all food and other residue have been removed. Labels do not have to be removed.

Please check the recycling page of the Hunterdon County website, www.co.hunterdon.nj.us/recycling for information about special county hazardous waste and electronics recycling events.

TOWNSHIP DIRECTORY

TOWNSHIP COMMITTEE

Abe Abuchowski	(908) 638-8523 x503	aabuchowski@lebtwp.net
Beverly Koehler, Mayor	(908) 638-8523 x504	koehler@lebtwp.net
Tom McKee, Dep Mayor	(908) 638-8523 x502	mckee@lebtwp.net
Mike Schmidt	(908) 638-8523 x501	schmidt@lebtwp.net
Brian Wunder	(908) 638-8523	bwunder@lebtwp.net

MEETINGS

Held at Municipal Building unless otherwise specified

Township Committee	7:00 PM 1st & 3rd Wed
Board of Health	6:30 PM 1st Wed as needed
Planning Board	7:00 PM 1st Tues
Board of Adjustment	7:00 PM 4th Wed
Environmental & Open Space Commission	7:00 PM 1st Mon
Park Committee	7:00 PM 2nd Mon
Agricultural Advisory Board	As Needed
Recreation Commission	7:30 PM 1st Thurs
Library Committee	7:30 PM 2nd Wed / Library
Historian Committee	7:00 PM 2nd Th / Museum

FIRE - POLICE - EMS

Emergency - Police, Fire, Medical 911

Police Dispatch	(908) 638-8515
Police Chief, Jason J. Cronic	(908) 638-8523 x201 policechief@lebtwp.net
Police Office Manager	(908) 638-8523 x203 policeadmin@lebtwp.net
Fire Chief, David Sulpy	(908) 638-4550
Fire Official, Gary Apgar	(908) 638-8523
Open Burn Fire Permit (Andover Forestry Office)	(973) 786-6350
Office of Emergency Management Coordinator, Police Chief Jason Cronic	(908) 638-8523 x201

SCHOOLS

Valley View School Grades Pre-K - 4	(908) 832-2175
Woodglen School Grades 5 - 8	(908) 638-4111
Voorhees High School Grades 9 -12	(908) 638-6116

TOWNSHIP CONTACTS

Township Clerk, Registrar of Vital Statistics, Board of Health Secretary	Karen Sandorse	(908) 638-8523 x101	Email: clerk@lebtwp.net
Deputy Clerk, Dog Licensing Agent, Deputy Registrar,	Kimberly Jacobus	(908) 638-8523 x102	Email: deputyclerk@lebtwp.net
Planning Board Clerk, Board of Adjustment Secretary	Gail Glashoff	(908) 638-8523 x103	Email: Planning@lebtwp.net
Tax Collector	Ann Marie Silvia	(908) 638-8523 x104	Hours: Th 2pm - 8pm Email: collector@lebtwp.net
Assessor	Erica Brandmaier	(908) 638-8523 x105	Hours: Th 5-8 PM or by appointment Email: assessor@lebtwp.net
Recycling Coordinator	JoAnn Fascenelli	(908) 638-8523 x106	Hours: F: 8am-4:30pm Email: treasurer@lebtwp.net
Zoning Officer	John Flemming	(908) 638-8523 x107	Hours: Th 4pm-8pm or by appointment Email: zoning@lebtwp.net
Department of Public Works	Warren Gabriel	(908) 638-8523 x301	Email: dpw@lebtwp.net
Animal Control	Robbie Lagonera	(908) 763-5035	
Bunnvale Library	Karla Drumm	(908) 638-8523 x401	Hours: W 1- 8, Th & F 9 - 5, Sa 9 - 2
Lebanon Township Museum	Gina Sampaio	(908) 638-8523 x405	Hours: T 9-3:30, Th 1-8, Sa 10-3:30
Recreation Commission	Maria Naccarato	Email: recreation@lebtwp.net	
EOS Commission / Green Team	Sharon Petzinger	Email: ltenv@lebtwp.net / LTGreenTeam@gmail.com	
Reserving Memorial Park Pavilion or Fields	Kimberly Jacobus	(908) 638-8523 x102	Email: deputyclerk@lebtwp.net
Lebanon Township Municipal Court - 1730 Route 31N 3rd Floor		(908) 735-3730	
Hunterdon County Department of Health		(908) 788-1351	
Construction Office, Christy Hoffman Farm, 108 Rt 512, Califon, NJ 07830		(908) 832-5552	Hours: Mon - Fri 7:30 AM - 3:00 PM

TOWNSHIP OF LEBANON

Lebanon Township Municipal Building
530 West Hill Road
Glen Gardner, NJ 08826

PRSRT STD
U.S. POSTAGE
PAID
Flemington, NJ
PERMIT NO. 405

Phone: 908-638-8523
Fax: 908-638-5957
Email: clerk@lebtwp.net

We're on the Web!
www.lebanontownship.net

CALENDAR

JUNE	JULY	AUGUST
6/3 Fireflies & Full Moon Hike: Mountain Farm	7/1 Historic New Hampton Exhibit: Museum	8/10 North Hunterdon Food Pantry Distribution
6/8 North Hunterdon Food Pantry Distribution	7/13 North Hunterdon Food Pantry Distribution	8/23 Book Club: Bunnvale Library
6/28 Book Club: Bunnvale Library	7/20 Firefighters' Festival: Memorial Park	
	7/26 Book Club: Bunnvale Library	

SEE ALL THE UPCOMING TOWNSHIP EVENTS ONLINE AT: WWW.LEBANONTOWNSHIP.NET/CALENDAR

NEWSLETTER NOTES

PUBLISHING SCHEDULE		ADVERTISING RATES EFFECTIVE FALL 23 ISSUE	
WINTER - December, January, February	Submission Deadline 11/1	Business Card - \$40.00	Half Page - \$130.00
SPRING - March, April, May	Submission Deadline 2/1	Quarter Page - \$70.00	Full Page - \$250.00
SUMMER - June, July, August	Submission Deadline 5/1	*Advertisements should include a check made payable to Lebanon Township	
FALL - September, October, November	Submission Deadline 8/1		

Please email submissions & ads to Robbie-Lynn Mwangi at newsletterlebtwp@gmail.com or mail to:
Lebanon Township Municipal Building, 530 West Hill Road, Glen Gardner, NJ 08826, Attn: Newsletter.